



RĪGA STRADIŅŠ
UNIVERSITY



RSU.ANATOMY.APP

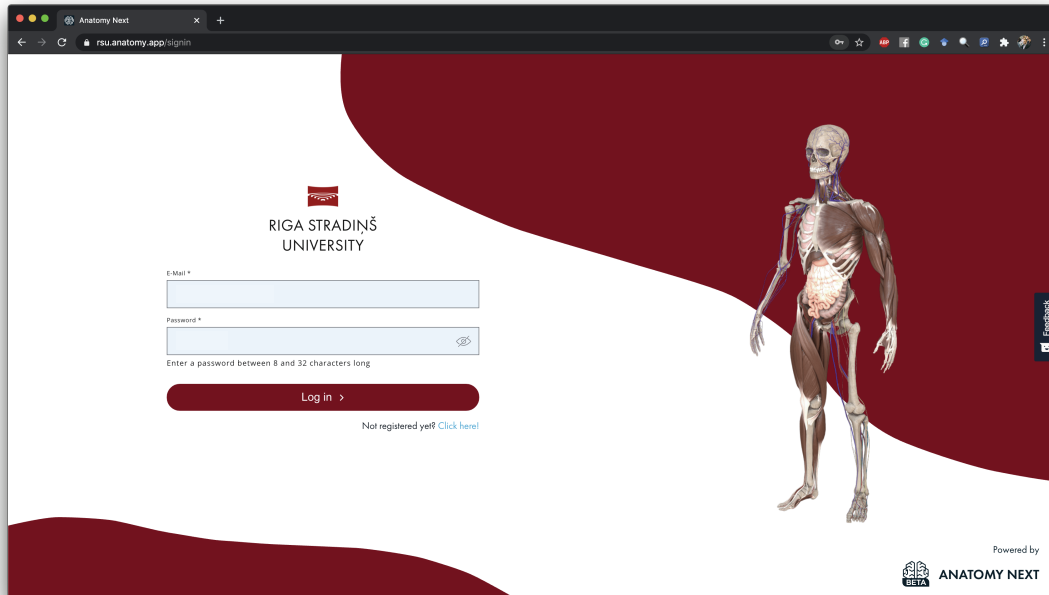
Powered by



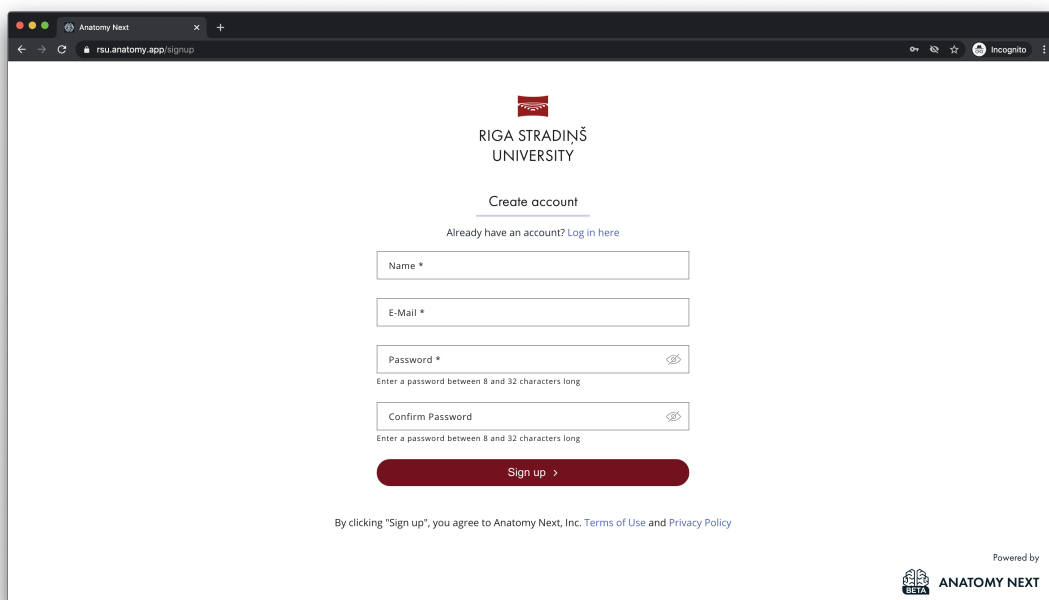
ANATOMY NEXT

HOW TO GET STARTED?

1. Open Your Web browser (preferably Google Chrome) and go to - **rsu.anatomy.app**
2. Press “**Not registered yet? Click here!**” below the log-in button



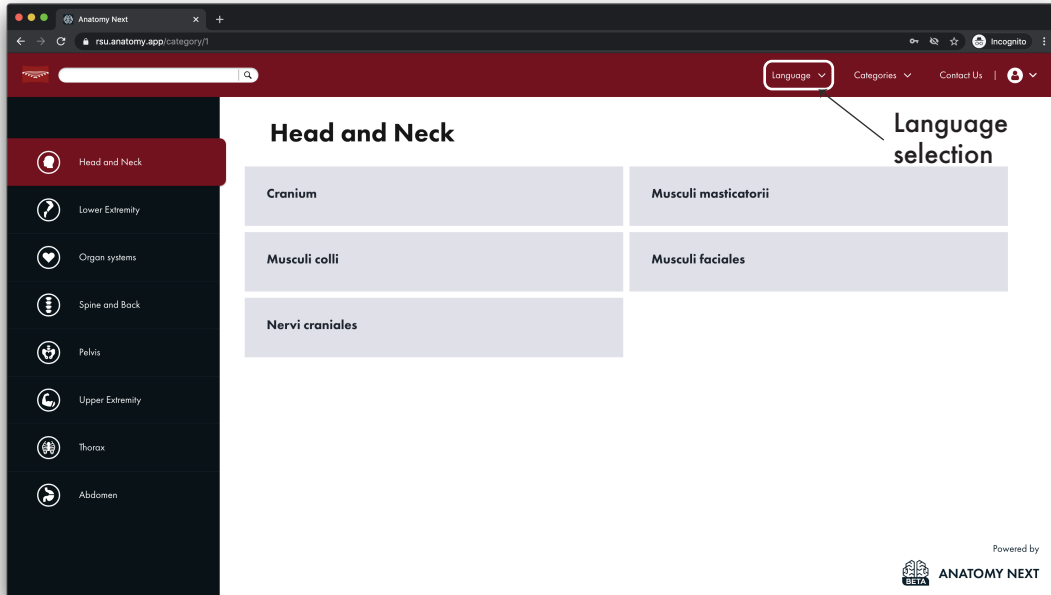
3. Register with Your **@rsu.edu.lv** email address. The password must contain at least one capital letter, one special character and one number.



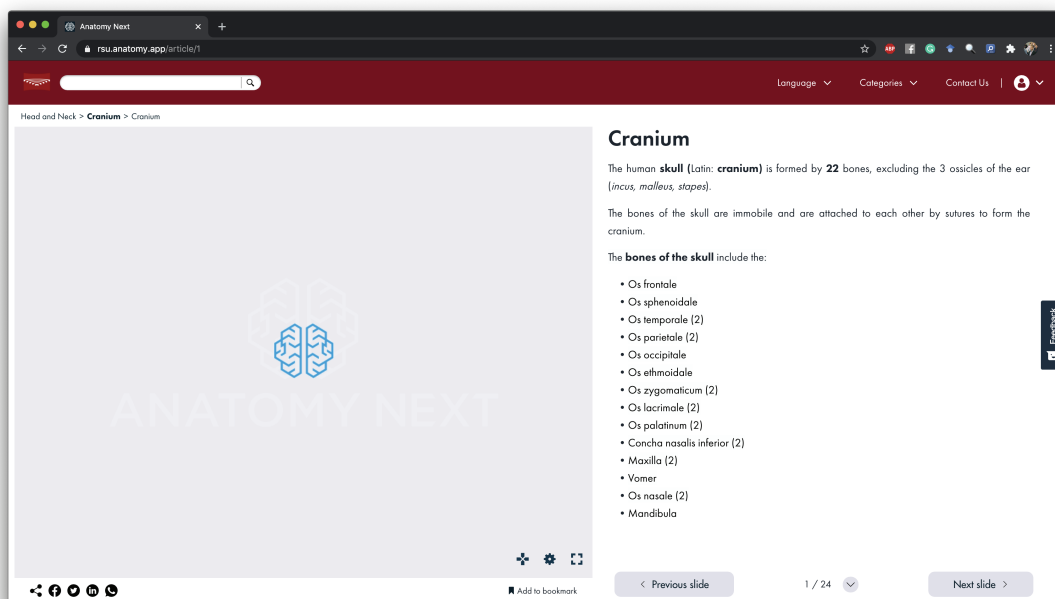
4. After the registration, You will receive a confirmation email. Please be sure to check the “junk/spam” folder for the message.
5. After confirming Your email address, visit **rsu.anatomy.app** again and log-in using the account information You just used to register.

HOW TO USE THE PLATFORM

1. After logging-in, You will be transfered to the category selection menu. You will see the list of categories on the left side, and articles within each category on Your right side.
2. To switch between "Latvian" and "English" languages, use the menu on the upper header of the website "Languages"

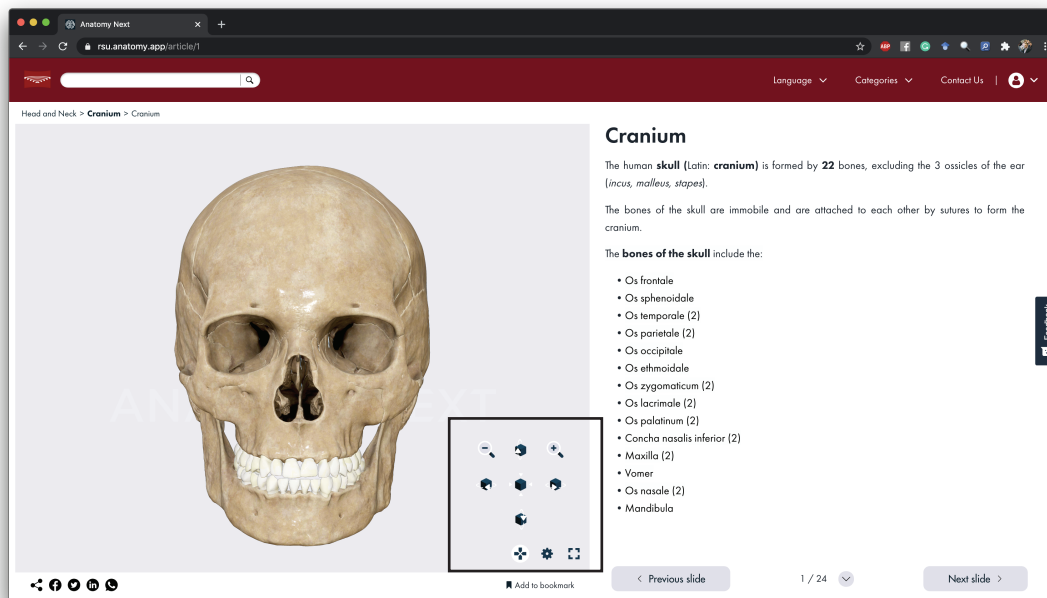


3. After selecting the category and article, You will be transfered to the article. You will see a 3D viewer on Your left and the textual information describing the 3D model on the right.
4. The 3D Viewer will take some time to load the 3D models. The loading time can last from a couple of seconds up to 20-30 seconds, depending on the complexity of the model and Your connection speed.



HOW TO USE THE PLATFORM

5. Once the 3D model is loaded, You will be able to manipulate it - rotate, zoom in and out, pan it. If You don't feel comfortable to manipulate the objects with your mouse or touchpad, touchscreen, You can use the 3D manipulation controls embedded within the viewer.
6. If You have an older computer / less powerful computer, You can turn off the "high definition" by clicking on the "cogwheel" icon and turning it off.



OTHER USEFUL INFORMATION

1. The application can be used from Your tablet, ipads and smartphone. We do however think, the best possible experience of the application is achievable on Your computer or Ipad.
2. The application does not have to be downloaded - it is completely "cloud-based"
3. You can still access all of the content on www.anatomy.app
4. If You run into any problems, feel free to let us know and request an assistance by using our email address - support@anatomynext.com
5. If You have any questions or feedback - please do let us know by emailing to info@anatomynext.com

Sincerely,
Anatomy Next Team