

RĪGAS STRADIŅA
UNIVERSITĀTE



Student hostel “Dzirciems” Welcome guide

CONTENTS

A TYPE ROOMS.....	4
A TYPE SINGLE ROOM	4
A TYPE SHARED ROOM.....	6
B TYPE ROOMS.....	7
B TYPE ROOM COMMON AREA.....	8
B TYPE SINGLE ROOM.....	9
B TYPE SHARED ROOM.....	9
C TYPE ROOMS.....	10
C TYPE ROOM COMMON AREA.....	11
C TYPE SINGLE ROOM.....	12
COMMON AREAS	13
LAUNDRY ROOM	13
GYM	14
STUDY AREAS	15
LIBRARY	16
GAME AREAS.....	17
PARKING.....	18
LOCAL AREA	19
PUBLIC TRANSPORT	19
SHOPS AND GROCERY STORES.....	21
CAFES AND RESTAURANTS	23
PARKS.....	25
USEFUL INFORMATION	27
ROOM CLEANING	27
DORM CLEANING CHART	27
CLEANING SUPPLIES	28
RECYCLING	30
CLEANING ORDER	31
BED LINEN.....	32
TYPES OF BED LINENS.....	32
BED LINENS CHANGE.....	33
GROUND RULES	34
PRINTING AND MAIL	35
TAXI SERVICES	36
FIRE SAFETY	37
HEATING AND SWITCHES	38
PROBLEM SOLVING	39
FACEBOOK GROUP.....	40
LEAVING THE HOSTEL FOR HOLIDAYS	41
MOVING OUT OF STUDENT HOSTEL.....	42



A TYPE ROOMS

A single bedroom suite for 1 person (A type Single room) or 2 people (A type Shared room).

Total area 17,4-23,3 m².

The suite consists of a living space, kitchen area and a bathroom with combined shower and toilet.

Furnishing: single bed, writing desk with a table lamp, chair, bookshelf, wardrobe with sliding door, kitchenette (consisting of electric stove, rangehood and refrigerator).

Kitchen utensils (pots, pans, cutlery, plates and dishes etc.) are not provided.

Free Wi-Fi service. Use the QR code for more detailed information on how to connect to Eduaroam:



A TYPE SINGLE ROOM





A TYPE SHARED ROOM



B TYPE ROOMS

Double bedroom suite for 2 people (2 B type Single rooms) to 3 people (1 B type Single room and 1 B type Shared room).

Total area 39.9–45.8 m².

The suite consists of living space, kitchen area, a combined shower and toilet bathroom, two separate bedrooms intended for one person or a couple.

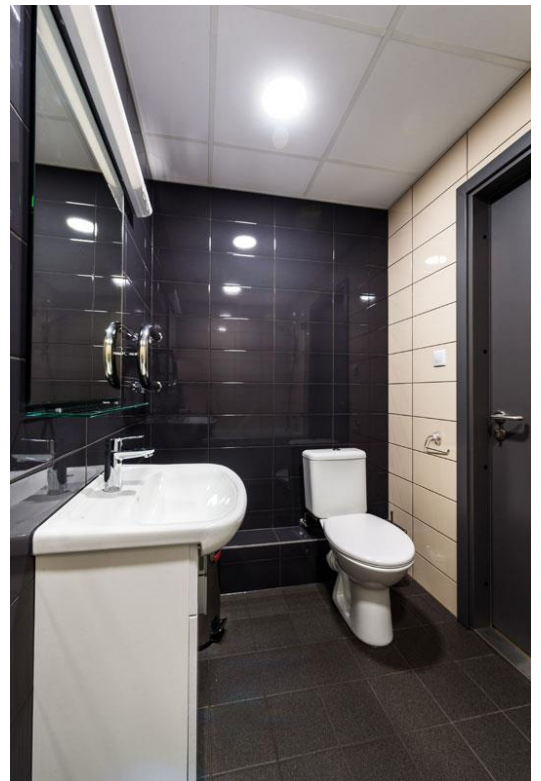
Furnishing: single-bed, writing desk with table lamp, chair, bookshelf, wardrobe with sliding door, kitchenette (consisting of electric stove, rangehood and refrigerator), dining table.

Kitchen utensils (pots, pans, cutlery, plates and dishes etc.) are not provided.

Free Wi-Fi service. Use the QR code for more detailed information on how to connect to Eduaroam:



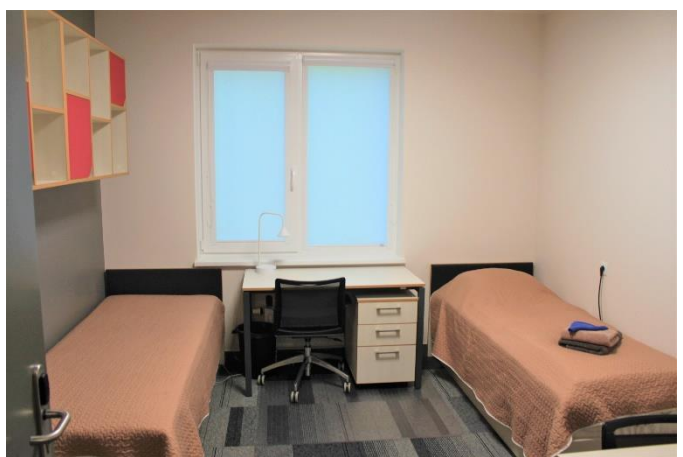
B TYPE ROOM COMMON AREA



B TYPE SINGLE ROOM



B TYPE SHARED ROOM



C TYPE ROOMS

Shared suite for 5 people (5 C type Single rooms).

Total area 98,6 m².

The suite consists of living space, kitchen area, a combined shower and toilet bathroom, WC and five separate bedrooms intended for one person.

Furnishing: single bed, writing desk with a table lamp, chair, bookshelf, wardrobe with sliding door, kitchenette (consisting of electric stove, rangehood and refrigerator), dining table, sofa.

Kitchen utensils (pots, pans, cutlery, plates and dishes etc.) are not provided.

Free Wi-Fi service. Use the QR code for more detailed information on how to connect to Eduaroam:



C TYPE ROOM COMMON AREA



C TYPE SINGLE ROOM



COMMON AREAS

LAUNDRY ROOM

The Student Hostel provides 2 washing machines, 2 dryers, iron and drying racks.

To use the washing machine or dryer create a profile on the service website. Use the QR code to access the website.

Then choose an available machine by number, make the payment online, load the machine with the laundry, use of detergent, bleach or softener and push the green “Start” button.



GYM

The gym is equipped with various weights, treadmill, indoor bicycle, mats, exercise balls, rigs and racks.

The gym is open 24/7.



STUDY AREAS

Study areas are located at the end of each floor. You will find water filter with hot, carbonated and cold water there.

The main study area with the view to the university is located on the third floor.



LIBRARY

The library area is located on the first floor.

It has a wide range of novels, brochures and also various board games.

It's also a spot to exchange books with others.



GAME AREAS

Game areas are located on second and third floors.

Recharge from studies by playing table tennis, table football or pool.

Game play time is until 11 PM.



PARKING

The student hostel has underground and open-air parking places. The hostel is connected to the underground parking facility.

By renting the parking lot for 6 months you will receive a 25% discount. By renting the parking lot for a year, you will receive a 35% discount.

It is also possible to use bicycle parking for free.



LOCAL AREA

PUBLIC TRANSPORT

RSU Students can use “Rīgas Satiksme” transport services for a student fee and buy a monthly ticket for the amount of 15.00 EUR.

To apply go to the nearest “Rīgas Satiksme” Client Service Centre and fill out the registration form. Please don’t forget to bring your Passport and RSU Student ID card.

Addresses for nearest Client Service Centers: Prāgas iela 1 (located at Riga International Bus Terminal) and Spīķeru iela 1.

Tickets can be uploaded at vending machines (at bus stops/ or on trams), ticket selling outlets (kiosks Narvesen, Latvia Post offices, petrol stations, shop Rimi) or online.

Tickets are valid on routes operated by *Rīgas Satiksme* (buses, trams, trolleybuses) as well as on minibuses (student discount is not valid for minibuses).

Nearest public transport stops from RSU Student Hostel “Dzirciems” to the city centre.



Transport options to get to the city centre from nearby public transport stops

 Tram	Route	Get on at	Get off at
No. 1	Imanta - Jugla	Botāniskais dārzs/Rīgas Stradiņa universitāte	11. novembra krastmala or Stacijas laukums
No. 5	Ilģuciems - Milgrāvis	Pulka sēta	Grēcinieku iela, 13. janvāra iela or Nacionālā opera
 Trolley	Route	Get on at	Get off at
No. 9	Ilģuciems - Stacijas laukums	Dārza iela/Rīgas Stradiņa universitāte	11. novembra krastmala or Stacijas laukums
No. 25	Ilģuciems - Brīvības iela	Dārza iela/Rīgas Stradiņa universitāte	Mākslas muzejs
 Bus	Route	Get on at	Get off at
No. 21	Imanta - Jugla	Dārza iela/Rīgas Stradiņa universitāte	11. novembra krastmala or Autoosta
No. 30	Daugavgrīva - Stacijas laukums	Dārza iela/Rīgas Stradiņa universitāte	Brīvības bulvāris
No. 39	Lāčupes kapi - Abrenes iela	Dārza iela/Rīgas Stradiņa universitāte	11. novembra krastmala or Abrenes iela
No. 37, No. 41	Imanta - Esplanāde	Botāniskais dārzs/Rīgas Stradiņa universitāte	Mākslas muzejs or Esplanāde

Use the QR code for detailed public transport routes and schedules:

Download the TRAFI app to also see the public transport routes and schedules:



SHOPS AND GROCERY STORES



Maxima X grocery store at Dzirciema iela 24.

This is the closest grocery store to the Student hostel as it takes a few minutes to walk there. This store is across the RSU main building.



MAXIMA X grocery store and **Latvijas pasts** post office at Dzirciema iela 1A.

This grocery store is sharing the building with the closest post office to the Student Hostel. It takes 5 minutes to walk to this store.



Shopping centre DAMME at Kurzemes prospekts 1A.

Various cafés, electronics, services, clothing stores and RIMI hypermarket grocery store are located in the shopping centre. It takes 15 - 20 minutes to walk to this store.



Shopping centre SPICE at Lielirbes iela 29.

This is the nearest shopping centre with various clothing stores, cafés, service shops and a separate building for household items. It takes 15 – 20 minutes to drive to this store.

CAFES AND RESTAURANTS



Cafes at Shopping centre DAMME at Kurzemes prospekts 1A.

Popular café **Lage Gastronomija**, restaurants **Vairāk Saules** and **Lido** are located in the shopping centre.



Bakery Ciemakukulis at Kuldīgas iela 19.

This bakery offers a wide variety of pastries, cakes, sweets, snacks and salads. It takes 5 minutes to walk to this bakery.



Kalnciema Ezītis Miglā at Slokas iela 17.

It is one of most respected and highly valued places by the locals. They often host concerts and game nights in a cosy atmosphere. It takes 15 – 20 minutes to walk to this restaurant. You can also receive a 10% discount by showing your student card. For more information visit their website using the QR code:



PARKS

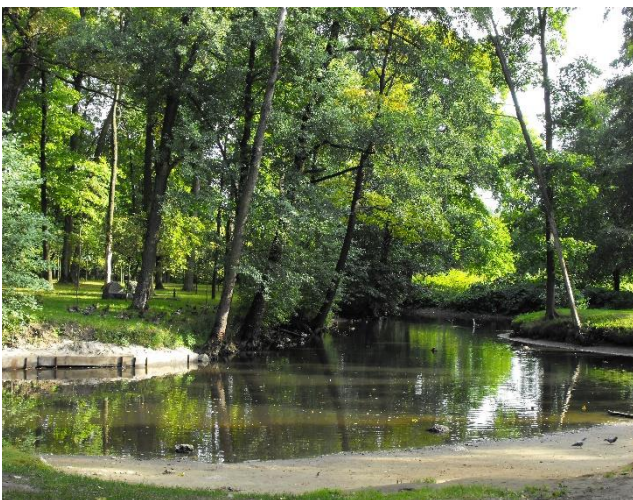
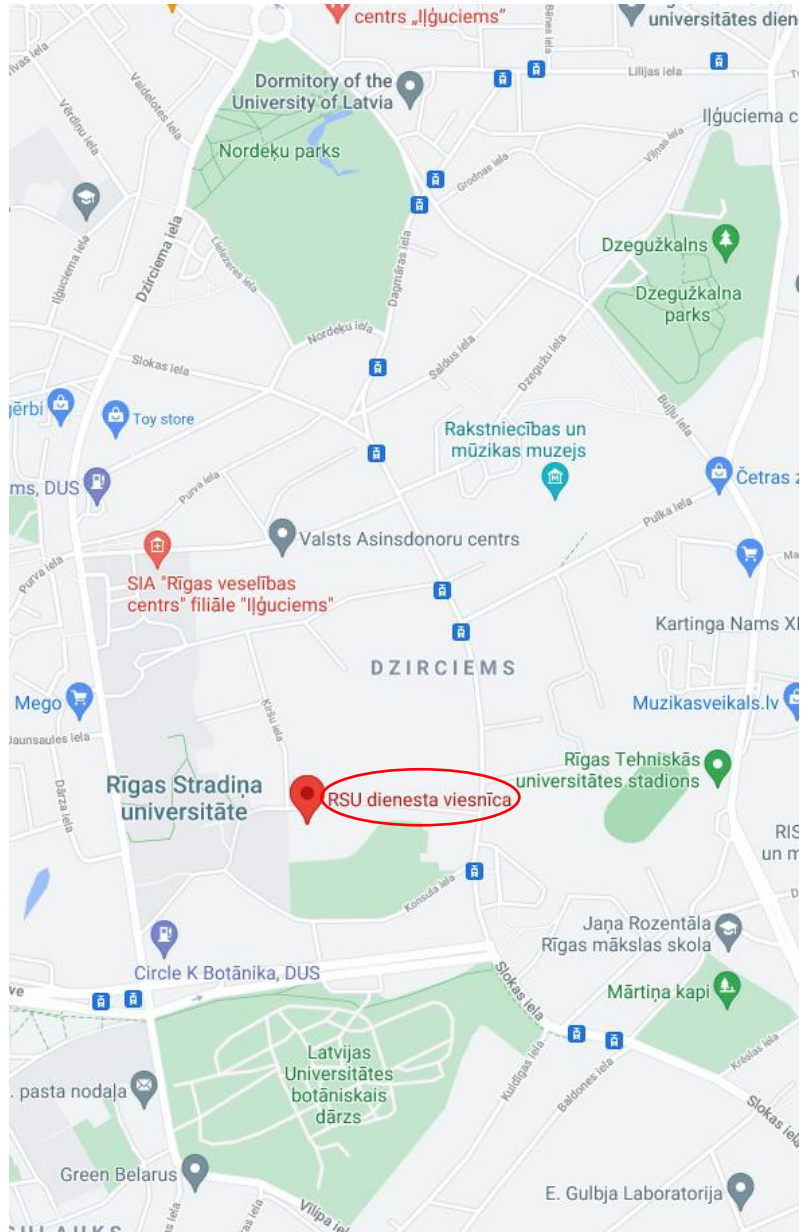


Park Dzegužkalns

It's a park with the highest natural hill in Riga; the highest point is at the northern end of the dune (28 m above sea level), relative height 16-18 m.

The park also has a stage for open area concerts.

It's a perfect place for jogging, taking a relaxing walk and watching the sunset or sunrise.



Park Nordeku

The total area of the park is 3.6 ha.

Today, 31 foreign and 15 native tree and shrub species grow in the park. European larch and cedar pines, Siberian cedar pines, Dutch lindens, etc. are planted here from foreign trees. The most common shrub species are rowan sorbarium and stream snowdrop, spiraea, spiny currant, red elderberry, lilac, roses are also found.



The Botanical Garden of the University of Latvia

The Garden was founded in 1922. Visitors can explore greenhouses and outdoor collections with about 6,000 different plants. It is one of the most well-loved recreational spaces in Riga – you can slowly walk around the Garden's territory, get to know plants from all over the world, visit the Palm House, as well as the Tropical Butterfly House, or just enjoy lush nature in the middle of the city.

The Garden's collections are wide and carefully chosen – they include protected plants, or those used for medical treatment, as well as a collection of the poisonous plants of Latvia. Many of the trees in the arboretum are uncommon for Latvian flora; for example, the witch hazel, cedar, walnut tree, ginkgo tree, mulberries, roses, cork tree and an edible chestnut tree.

For more information about the botanical garden and visiting hours visit their website using the QR code:



USEFUL INFORMATION

ROOM CLEANING

DORM CLEANING CHART

These are our suggestions to keep your room clean and tidy and to prevent any damages.

Daily

- Take out the trash
- Make your bed
- Clean off cluttered surfaces
- Clean the shower glass
- Clean all surfaces and stove after cooking

- Vacuum, sweep the floor, wash the floor (linoleum)
- Do the laundry
- Disinfect commonly touched surfaces
- Get rid of clutter piles

Weekly

Monthly

- Clean the mirrors
- Clean out the mini fridge
- Go through your old food and discharge the old food

CLEANING SUPPLIES

For daily cleaning tenants can use student hostel's provided vacuum cleaner, broom and mop.

Please see the list of cleaning products we suggest to use to keep the rooms clean!



Seal ECO – bathroom: bathroom cleaner against limestone.

Effective against limestone deposits, as well as soap deposits. Cleaner for all types of sanitary facilities and surfaces (tiles, shower stalls, water taps, sinks, acrylic surfaces, baths).

Buy it at drugstore Drogas:



Seal Tīrīšanas līdzeklis VANNAS ISTABAI: bathroom cleaner, especially suitable for acrylic surfaces.

Effective cleaning agent for cleaning sinks, bathtubs, tiles and other washable surfaces.

Buy it at drugstore Drogas:



Seal Tīrīšanas līdzeklis KALŅĶAKMENIM: limescale cleaner.

Detergent for cleaning and removing limescale deposits of water faucets, kitchen dish drains, shower cabins and acrylic bathtubs.

Buy it at drugstore Drogas:





**Seal Tīršanas līdzeklis WC OCEAN:
toilet cleaner.**

Can be used for toilet bowl, bath,
plumbing cleaning. Thee product
effectively cleans rust and limestone
sediments, dissolves urea formed stone.

Do not use for water taps!

Buy it at drugstore Drogas:



**Seal Tīršanas līdzeklis STIKLAM:
window cleaner.**

Used for cleaning windows, mirrors,
glass, ceramic surfaces, refrigerators
and magnetic boards

Buy it at drugstore Drogas:

Tip: we also suggest to use vinegar for
cleaning shower glass!



**Seal Tīršanas līdzeklis VIRTUVEI:
for dirty surfaces and greasy
deposition.**

Suitable for moisture resistant surfaces
(ovens, rangehoods, stoves, tiles,
metallic, plastic, ceramic surfaces,
painted walls).

Do not use it for wooden and laminated
surfaces!

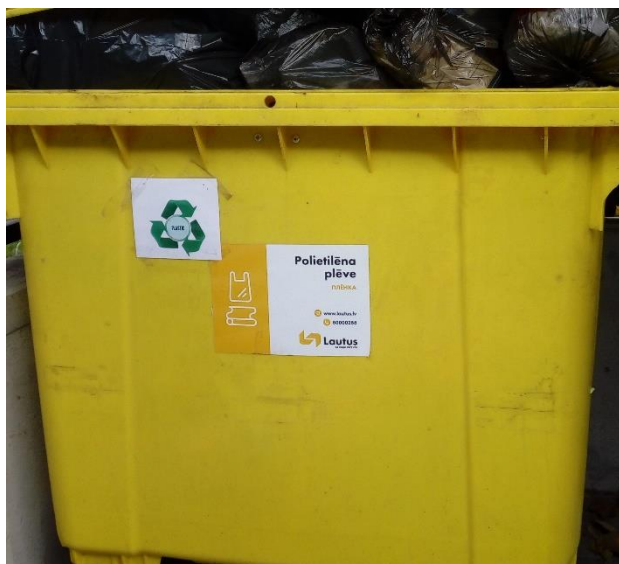
Buy it at drugstore Drogas:



RECYCLING

At the Student hostel we offer 4 types of recycling options:

- 1) **For plastic** – plastic shopping bags, bottles, shampoo bottles and other similar plastic – **use the yellow container;**
- 2) **For glass** – use the green container;
- 3) **For paper, cardboard** – flattened boxes, beverage cardboard boxes, newspapers and other similar cardboard products – **use the blue container;**
- 4) **For general waste** – use the black container.



CLEANING ORDER

During your stay at the Student hostel it is also possible to order room cleaning service.

We also ask all the tenants to order it before ending the stay at the Student hostel.

The price for room cleaning for A type rooms is 14,52 EUR, for B and C type rooms: 7,02 EUR.

To order the cleaning service, please use the QR code:



Fill out the reservation form with your name, surname, phone, e-mail address, address of the hostel (Dārza iela 5, Rīga), room number, your preferred cleaning date and time and pay using your online banking service.

Language ▼

+37180001599 My Account ▼ Wish List (0) Shopping Cart Checkout GDPR Panel

CiViNiTY
Solutions

Search

Q

ORDER CLEANING

Reservation Form

* Name

* Surname

* Phone

* E-mail

* Hostel

* Room

* Date

* Time

Comment

Price 6.21 EUR

TAX 21% 1.3 EUR

Price with TAX 7.51 EUR

PAY

BED LINENS

TYPES OF BED LINENS

The Student hostel is providing tenants with these types of bed linens:



- **Bed cover**
- **Blue kitchen towel**
- **Bathroom towels (grey and brown)**
- **Pillow**
- **Pillowcase**
- **Duvet**
- **Duvet cover**
- **Blanket**
- **Moisture-proof bed sheet**
- **Sheet**

If you are planning to use your own bed linens or towels, please inform the front desk and return our provided bed linens or towels to us.

BED LINEN CHANGE

- The Student hostel is providing a bed linen and towel change. It's held approx. every 10 days.
- The bed linen change schedule and notices will be sent beforehand to the tenants' e-mail addresses.
- The laundry collector will collect and replace the used bed linens with a clean set of bed linens and towels.
- Once a month during the bed linen and towel change a room check is held. During the room check the room cleanliness, bathroom cleanliness and freezer in the fridge is being checked.
- If you have received a damaged bed linen set, inform the administration immediately during the linen change day, as any complaints after that will not be accepted.
- Please note that by damaging bed linens or towels (for example with hair dye, non-washable stains etc.) we will issue a fine for losses incurred.
- Using a towel as a shower rug also damages it, so we would recommend you to purchase a shower rug.
- The bed linen and towels are included in the rental price.



GROUND RULES

Some of the main ground rules of RSU Student hostel “Dzirciems”:

- ❖ **The rental invoices** should be paid within 10 days in accordance with the invoice received.
- ❖ For late payment of rent or services, the Tenant shall pay RSU a contractual penalty of 0.5% (half a percent) of the amount of the delayed payment per day. This penalty will be added to next month's invoice.



- ❖ **The Tenant's guests shall have the right to stay free of charge in the Student hostel from 7:00 to 23:00;** before and after this specified time, the Tenant's guests will not be accepted at the Student hostel.
- ❖ **Observe the silence in the Student hostel from 23:00 to 7:00,** including not playing musical instruments, not playing audio recordings, not listening to radio or other devices, if it may disrupt or hinder other Tenants. During the rest of the day, the noise generated by the Tenant must not interfere with other Tenants and the Student hostel's Administration.



- ❖ The Tenant and his/her guest shall be **prohibited to** stay in the Student hostel in a state of intoxication and to use alcohol, narcotic drugs, psychotropic and other intoxicating substances, smoke and use electronic smoking devices in the premises and the territory of the Student hostel.
- ❖ The Tenant and his/her guest shall be **prohibited to** allow unauthorised persons to stay at the Student hostel without approval of the Student hostel's Administration and to hand over the student or employee's card, access card or the key of the rented room to unauthorised persons in order to enter and stay in the Student hostel.



- ❖ **Do not move the furniture or rearrange the existing layout of furniture.** Furniture shall not be remade - shall not be shortened, extended and the original form and number shall not be altered.



PRINTING AND MAIL

It is possible to use printer and copy machine at the student hostel.

To use it add balance to your student card. If you have a Latvian bank account use the RSU bank details to make the payment and in the payment, field write: "Payment to the library for printing".

If you don't have a Latvian bank account, visit the RSU library to add it manually.

Service	Price
Printing:	
Black and white, A4	0,06 €
Black and white, A3	0,12 €
Colour, A4	0,12 €
Colour, A3	0,25 €
Copying:	
Black and white, A4	0,06 € x number of copies
Black and white, A3	0,12 € x number of copies
Colour, A4	0,12 € x number of copies
Colour, A3	0,25 € x number of copies

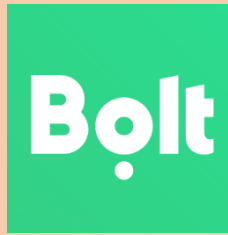


To send mail to the Student hostel use the address: **Dārza iela 5, Rīga, Latvija, LV-1007.**

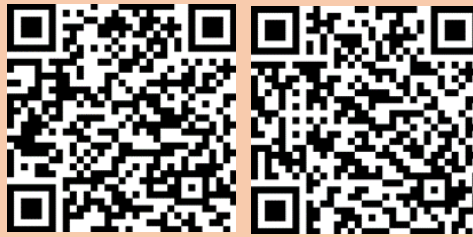
You will be notified by e-mail to come to the front desk to receive your package.

It is possible to get a notification to receive your package at the local post office. It is 5 minutes away from the Student hostel. The address of the post office: **Rīgas 83. pasta nodaļa, Dzirnavu iela 1a, Kurzemes rajons, Rīga, LV-1083.** You will receive your package at the post office by giving the postal service your notification and showing your ID.

TAXI SERVICES



Download the Bolt app using the QR code or call to +3718999



Download the BalticTAXI app for android or apple device using the QR code or call to +37120008500



Download the Redcab app using the QR code or call to +3718383



Call to +37127228880

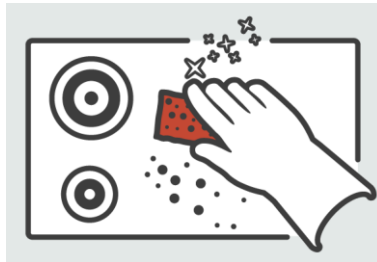


Call to +37167222222

FIRE SAFETY

According to the National Fire Protection Association, cooking is the leading cause of home fires and fire injuries. Ranges or cooktops cause 62% of home fires. Please find some tips about fire safety during cooking:

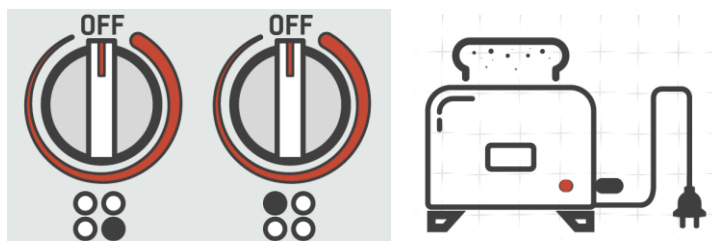
- **Prevent fires** by keeping your stove top **clean of grease and dust**



- Keep anything that can **catch fire** (paper or fabric towels, kitchen gloves) away from your **stove top**



- Double check that **everything is off** when you finish cooking and **always** unplug countertop appliances when not in use



- **Never** leave the kitchen while cooking, **turn on the rangehood** and open the window while cooking
- **Never** cook while being sleepy or taking medication that makes you drowsy



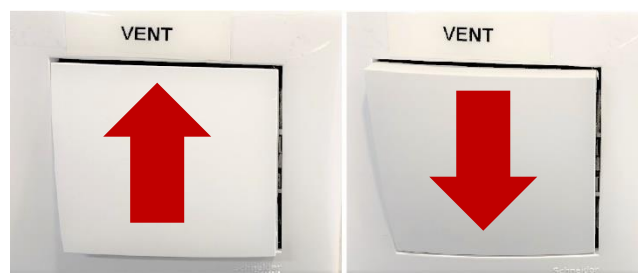
HEATING AND SWITCHES

Some tips about using the heater: 1) If the heater is turned to “5” but it is still cold, please fill the problem reporting form (information about it is in the next page).

2) If it is too hot in your room, please turn the heater on lower setting. To ventilate the room, keep the window open for 15 minutes.

If you are keeping the window open, especially in winter, please turn the heater to “*”. Notice, that the heaters are working from late autumn till early spring.

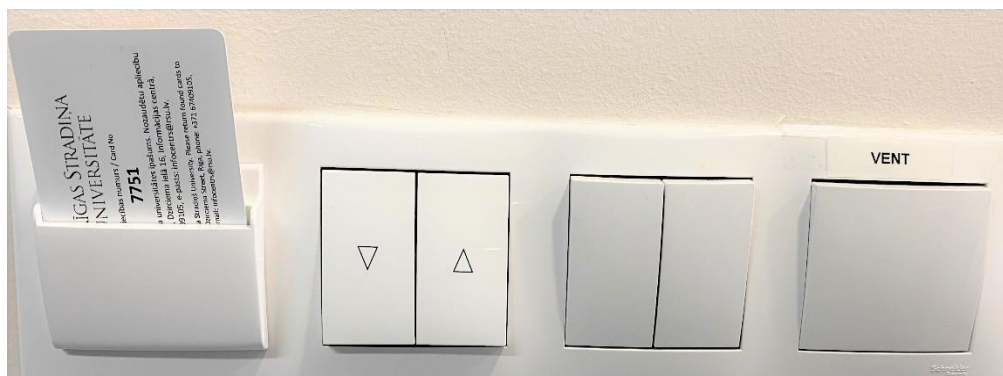
Ventilation system: when the ventilation is switched upwards, it will work with 70% power, but if it is pressed downwards, it will work with 30% power.



The rooms also have **automatic blinds** outside the window. Use the switch to open or close them. Note that the blinds can automatically close in response to bright light or sunlight.



To control the ventilation, blinds and to turn on the lights use your student ID card or any card shaped object and place it in the socket.



PROBLEM SOLVING

If you have noticed any problems with your room, please report it using the **Problem reporting form**. By filling it out our repairman will receive a notification to go to your room and fix it.

The most common problems are clogged shower drain or sink faucet, toilet leakage, light bulb change above the stove and in the bathroom, heater does not work, door does not lock and broken furniture or kitchen trash bin.

← Service Desk
https://help.rsu.lv/servicedes...

None

Carpenter's works / Galdnieka darbi

Electricity / Elektriķa

Ventilation and cooling / Ventilācija un dze...

Heating / Apkure

Water and sewer / Ūdens un kanalizācija

2

Water and sewer / Ūdens un kanalizācija

Request type / Pieteikuma veids (optional)

Water and sewer / Ūdens un kanalizācija

Summary / Kopsavilkums

3

Water stays in shower

Room number / Istabas numurs

4

101

Description / Apraksts (optional)

5

The shower drain needs to be cleaned in room No.101.

Attachment / Pielikums (optional)

6

Drag and drop files, paste screenshots, or
browse

7

Create

Cancel

1. Log in to your RSU profile through the QR code:



2. Choose the problem type

3. Write the summary of the problem

4. Write your room number

5. Describe the problem

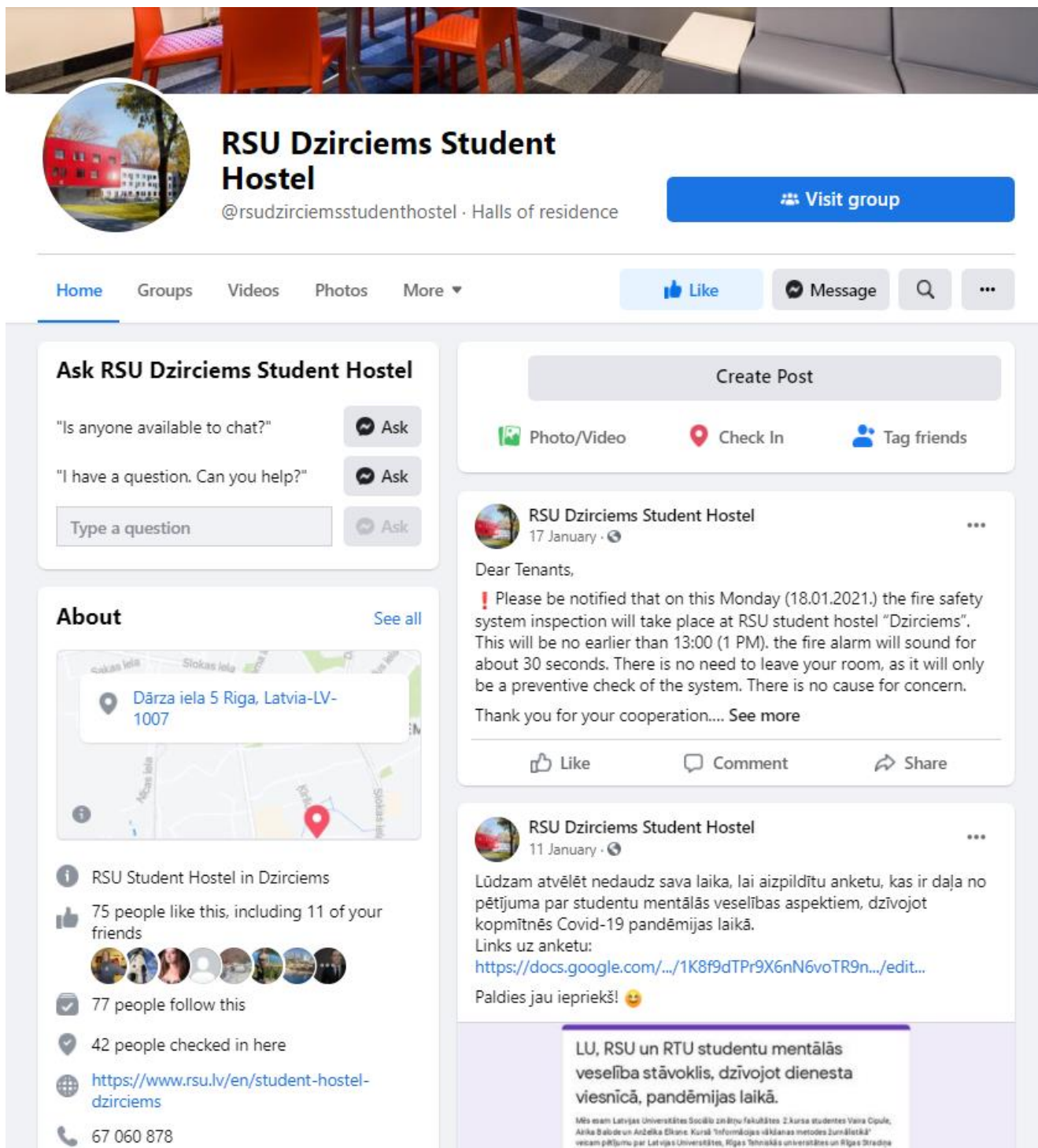
6. If necessary, attach a photo of the problem

7. Send the application by clicking on the button "Create"

FACEBOOK GROUP

Find us on Facebook: **RSU Dzirciems Student Hostel Group**.

Join to find out the latest news, upcoming events, lost and found items, participate in discussions, questionnaires and more!



The image shows a screenshot of the Facebook group page for "RSU Dzirciems Student Hostel". At the top, there is a banner image of a modern interior with orange chairs and a grey sofa. Below the banner is the group's profile picture, which is a red building. The group name "RSU Dzirciems Student Hostel" is displayed, along with the handle "@rsudzirciemsstudenthostel" and the description "Halls of residence". A blue button labeled "Visit group" is visible. The navigation bar includes tabs for Home, Groups, Videos, Photos, and More. On the right side of the navigation bar are buttons for Like, Message, and a search icon. The main content area is divided into two columns. The left column contains a section titled "Ask RSU Dzirciems Student Hostel" with a text input field and "Ask" buttons. Below this is an "About" section with a map showing the location at "Dārza iela 5 Rīga, Latvia-LV-1007" and a list of statistics: 75 people like this, 77 people follow this, and 42 people checked in here. The right column features a "Create Post" button and two posts. The first post, dated 17 January, is a text announcement about a fire safety system inspection on Monday (18.01.2021) at 13:00. The second post, dated 11 January, is a text announcement asking tenants to complete a questionnaire about their mental well-being during the COVID-19 pandemic. Both posts have "Like", "Comment", and "Share" buttons. At the bottom of the right column, there is a link to a Google Docs questionnaire.

RSU Dzirciems Student Hostel
@rsudzirciemsstudenthostel · Halls of residence

Visit group

Home Groups Videos Photos More ▾ Like Message

Ask RSU Dzirciems Student Hostel

"Is anyone available to chat?" Ask

"I have a question. Can you help?" Ask

Type a question Ask

About See all

Dārza iela 5 Rīga, Latvia-LV-1007

RSU Student Hostel in Dzirciems

75 people like this, including 11 of your friends

77 people follow this

42 people checked in here

<https://www.rsu.lv/en/student-hostel-dzirciems>

67 060 878

Create Post

Photo/Video Check In Tag friends

RSU Dzirciems Student Hostel
17 January · 🌐

Dear Tenants,

! Please be notified that on this Monday (18.01.2021.) the fire safety system inspection will take place at RSU student hostel "Dzirciems". This will be no earlier than 13:00 (1 PM). the fire alarm will sound for about 30 seconds. There is no need to leave your room, as it will only be a preventive check of the system. There is no cause for concern.

Thank you for your cooperation.... See more

Like Comment Share

RSU Dzirciems Student Hostel
11 January · 🌐

Lūdzam atvēlēt nedaudz sava laika, lai aizpildītu anketu, kas ir daļa no pētījuma par studentu mentālās veselības aspektiem, dzīvojot kopmītnēs Covid-19 pandēmijas laikā.

Links uz anketu:
<https://docs.google.com/.../1K8f9dTPr9X6nN6voTR9n.../edit...>

Paldies jau iepriekš! 😊

LU, RSU un RTU studentu mentālās veselības stāvoklis, dzīvojot dienesta viesnīcā, pandēmijas laikā.

Mēs esam Latvijas Universitātes Sociālo zinātņu fakultātes 2.kursa studentes Vaira Cipule, Anika Balode un Anželika Elmane. Kurš? Informācija vāktā ar mērķi "Jaunākie" veicam pētījumu par Latvijas Universitātes, Rīgas Tehniskās universitātes un Rīgas Stradiņa universitātes studentu mentālās veselības stāvokli, dzīvojot dienesta viesnīcā pandēmijas laikā.

LEAVING THE HOSTEL FOR HOLIDAYS



MOVING OUT OF STUDENT HOSTEL

If your lease contract deadline is coming up and you are planning to move out, please follow these 3 steps to ease your moving out process:

- 1) **Filling out the application.** Before moving out you have to fill out the application form at least one month before leaving. You can request the application at the front desk.
 - 2) **Leaving the bed linens and towels.** On the day you are moving out you have to take off all the hostels provided bed linens and towels, fold them and place them at the end of the bed.
 - 3) **Cleaning the room.** All the tenants have to order the room cleaning from the previously mentioned cleaning company, so we can be sure, that the room will be completely cleaned and we could offer it to the next potential tenant. We recommend ordering the cleaning service on the next day you are moving out. Even before the cleaning company will come, you still have to leave your room tidy and without trash.
- ❖ On the moving out day after you have gathered all your belongings in the suite cases, please inform the front desk. The administrator will go and check your room with you to make sure, that all the hostels provided bed linens and towels will be left undamaged in the room. The room will be observed overall.
 - ❖ If there will be any damages to the furniture or on the walls, that were not there before moving in the room and informed about during your stay at the room, we will prepare an act on violations on internal regulations and a fine, that will be covered from your deposit.
 - ❖ The deposit is usually paid back in 4 weeks' time after moving out to the bank account, that will be written in the application.

*If you have any other questions, you can always
contact us on frontdesk@rsu.lv*



RĪGAS STRADIŅA
UNIVERSITĀTE