

RĪGA STRADIŅŠ UNIVERSITY ADMINISTRATION

Constitutional
Assembly

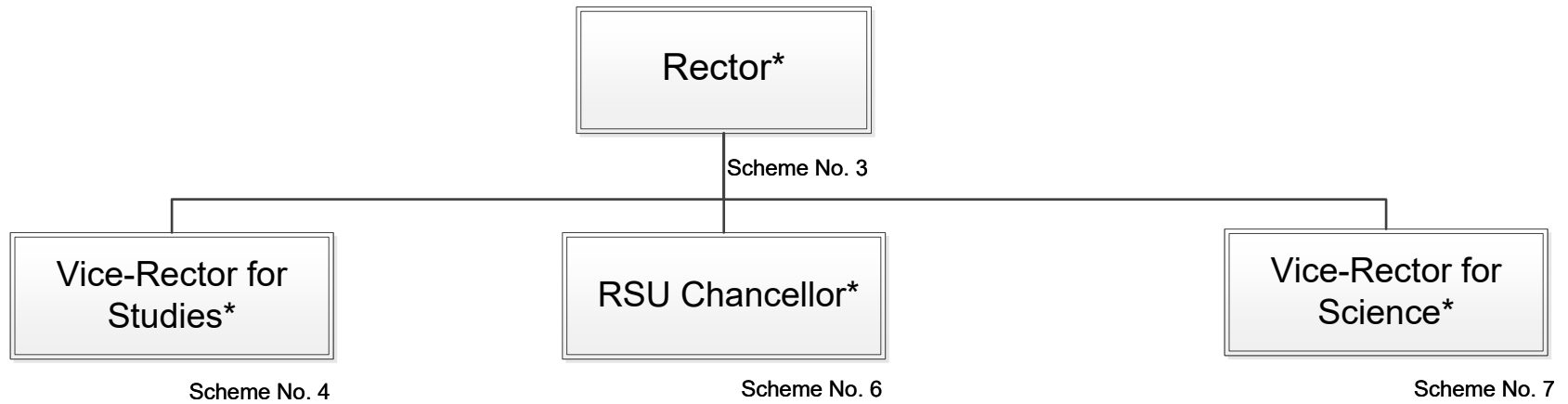
Senate

Rector

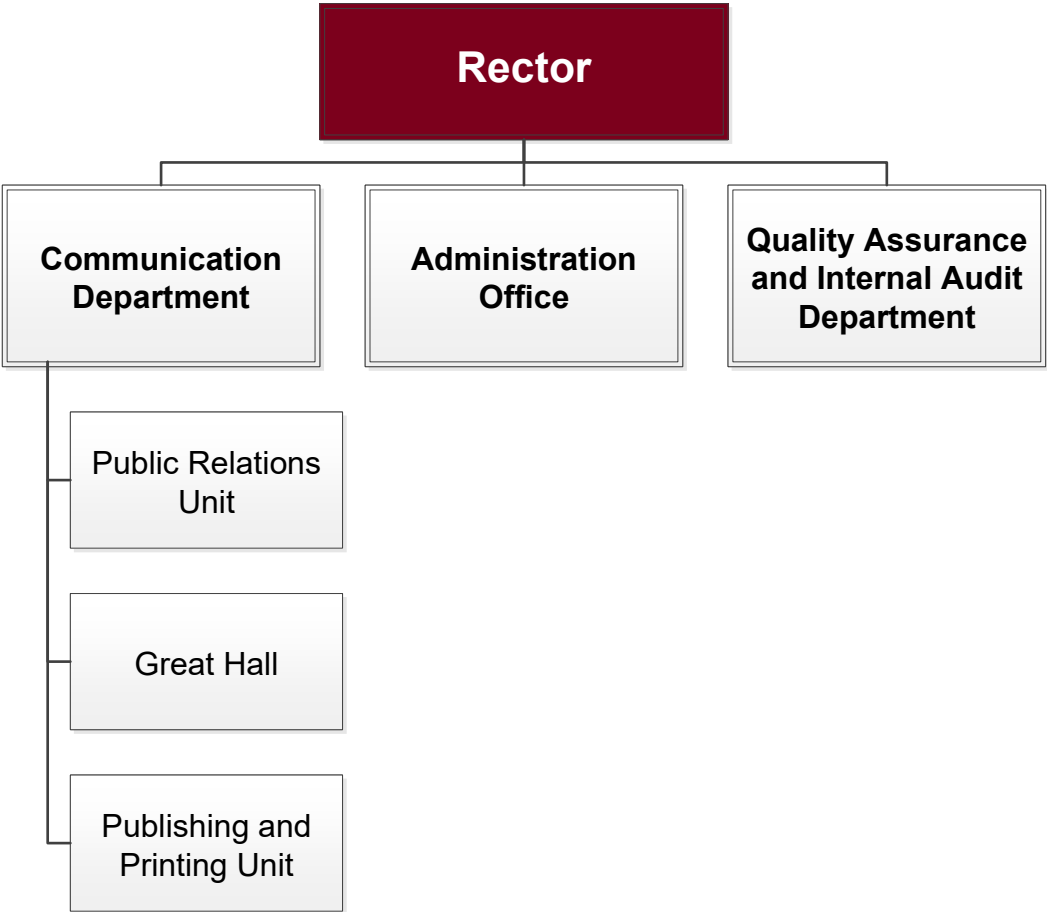
Council

Academic
Arbitration Court

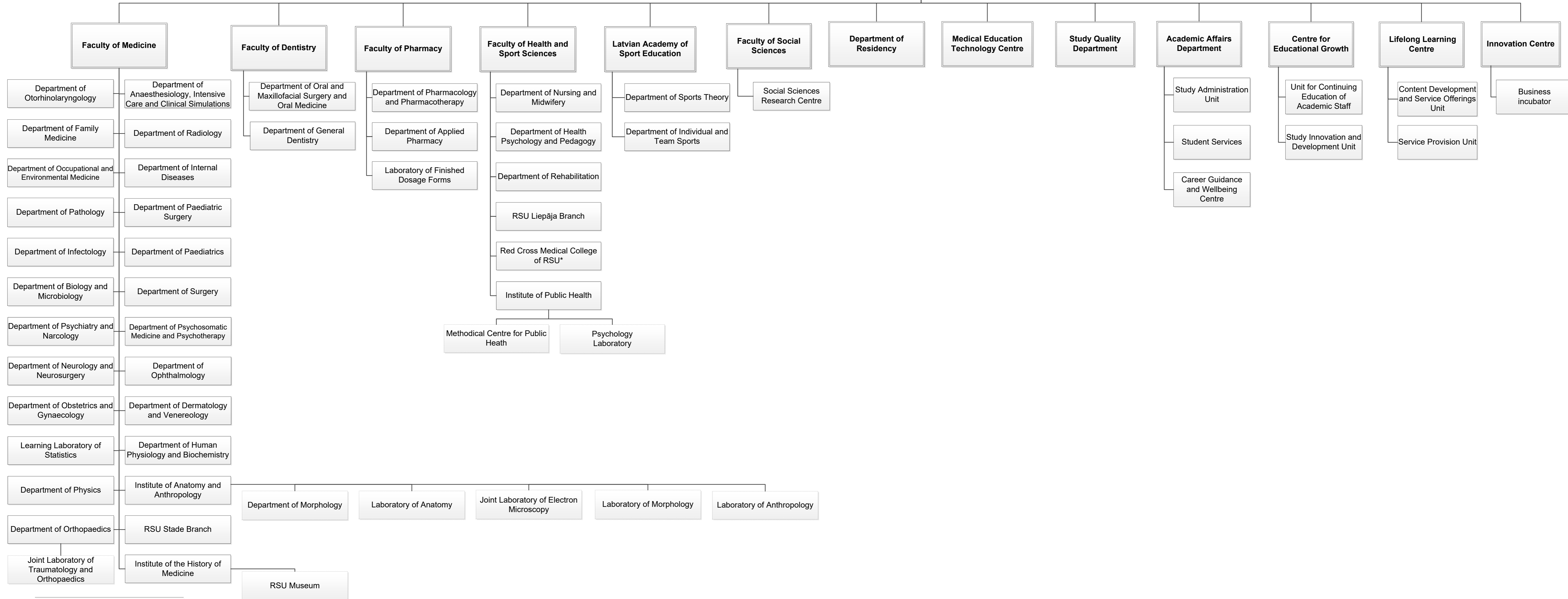
RĪGA STRADIŅŠ UNIVERSITY ORGANIZATIONAL STRUCTURE



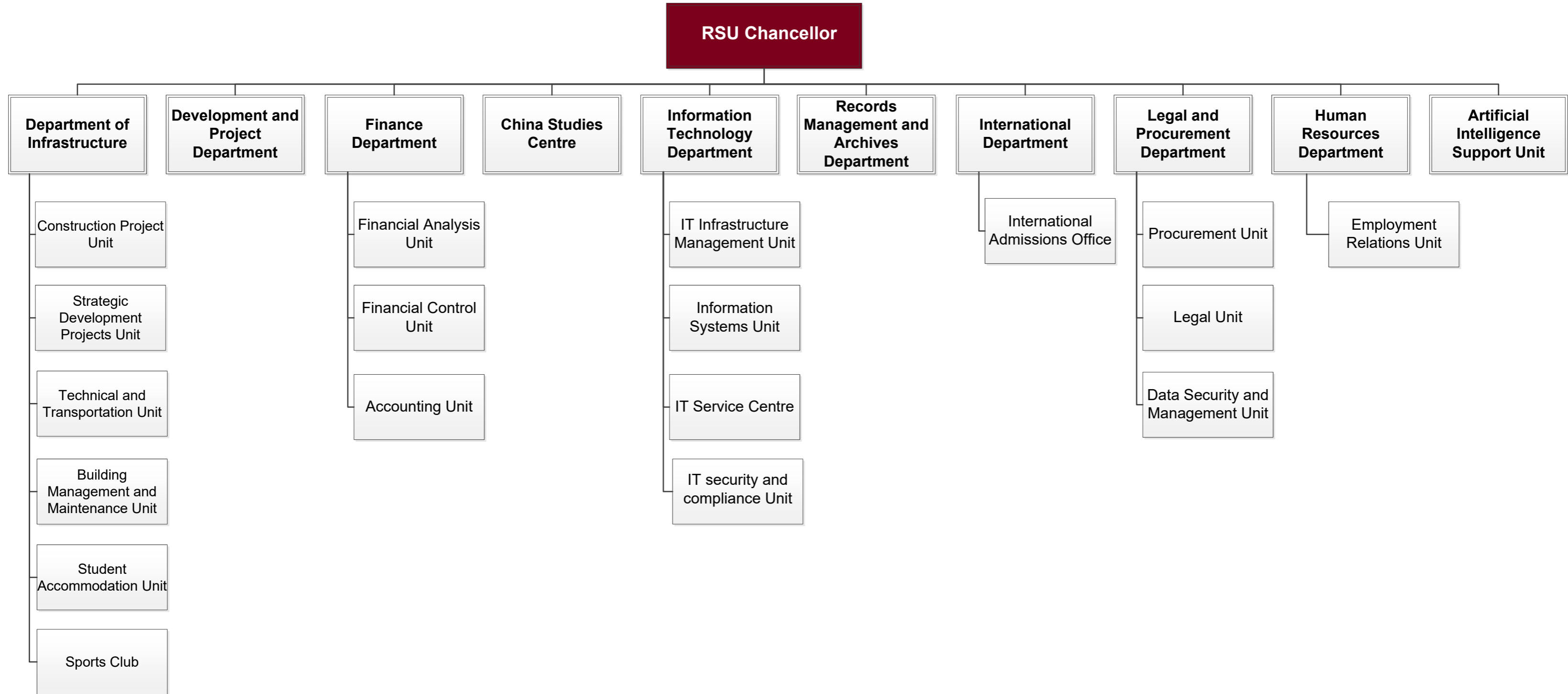
* Together, the Rector and Vice-Rectors shall classify the departments and employees under their authority in RSU information systems in the management of the relevant field; the Chancellor and the departments and staff under his command are classed in the Chancellor's service



Vice-Rector for Studies



* The Red Cross Medical College of RSU is under the authority of the Rector. The College is supervised by the Faculty of Health and Sports Sciences



Vice-Rector for Science

