

RĪGA STRADIŅŠ UNIVERSITY ADMINISTRATION

Constitutional
Assembly

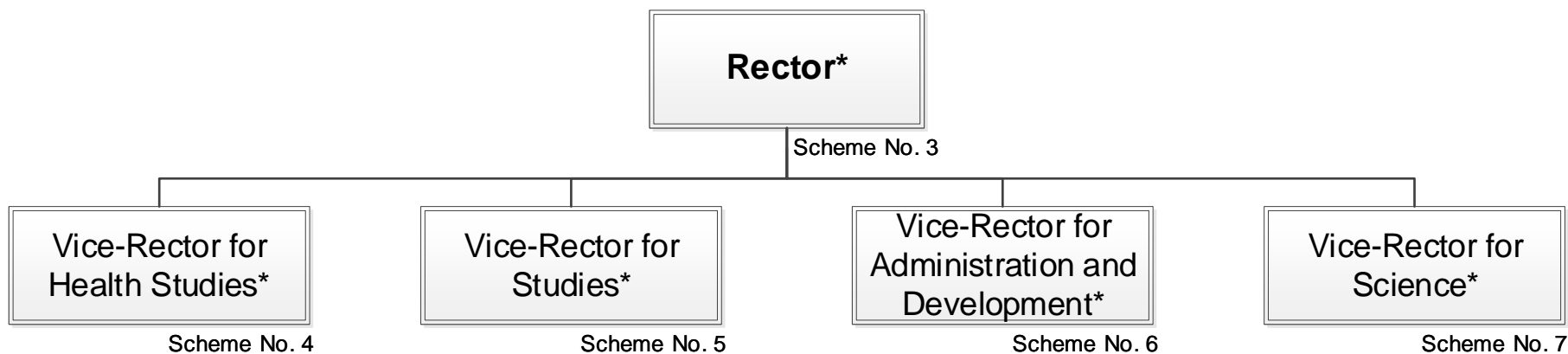
Senate

Rector

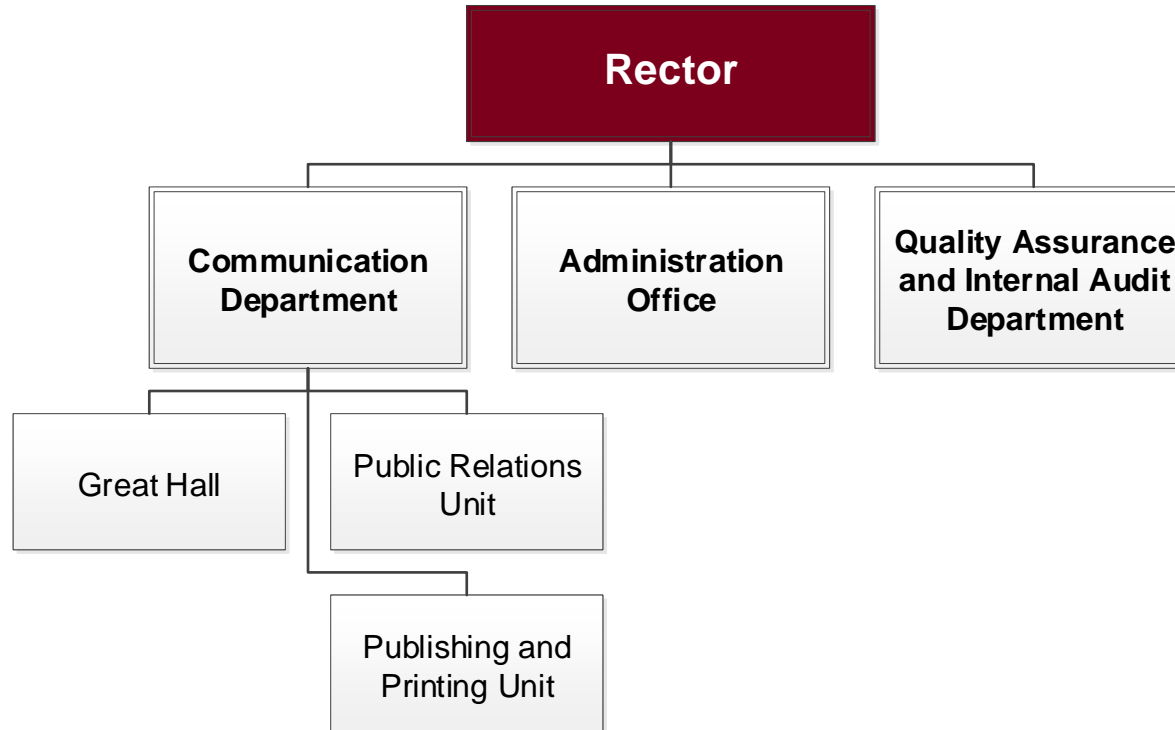
Council

Academic
Arbitration Court

RĪGA STRADIŅŠ UNIVERSITY ORGANIZATIONAL STRUCTURE



* In RSU information systems Rector and Vice-Rectors alongside with structural units and staff under their authority have been classified under administrative body of relevant field.



Vice-Rector for Health Studies

