



**Student hostel
“Dzirciems”
Welcome guide**

CONTENTS

A TYPE ROOMS	5
A TYPE SINGLE ROOM.....	5
A TYPE SHARED ROOM	7
B TYPE ROOMS	8
B TYPE COMMON AREA	8
B TYPE SINGLE ROOM	9
B TYPE SHARED ROOM	10
C TYPE ROOMS	11
C TYPE ROOM COMMON AREA	11
C TYPE SINGLE ROOM	12
PRICING	13
COMMON AREAS	14
LAUNDRY ROOM	14
GYM.....	15
STUDY AREAS.....	16
GAME AREAS	18
PARKING	19
LOCAL AREA	20
PUBLIC TRANSPORT	20
Nearest public transport stops from RSU Student hostel “Dzirciems”	21
Transport options to get to the city centre from nearby public transport stops.....	21
SHOPS AND GROCERY STORES	23
CAFES AND RESTAURANTS	26
PARKS	28
USEFUL INFORMATION	30
ROOM CLEANING.....	30
CLEANING SUPPLIES.....	31
RECYCLING	33
CLEANING ORDER	34
BED LINEN AND TOWELS	35
TYPES OF BED LINENS AND TOWELS.....	35
BED LINEN AND TOWEL CHANGE.....	36
GENERAL RULES	37
PRINTING AND MAIL	38

FIRE SAFETY	39
HEATING AND SWITCHES	40
PROBLEM SOLVING	41
LEAVING THE HOSTEL FOR HOLIDAYS	42
Tips before leaving the Student hostel for holidays	42
MOVING OUT OF THE STUDENT HOSTEL	43



A TYPE ROOMS

A single bedroom suite for 1 person (A type Single room) or 2 people (A type Shared room).

Total area 17.4 - 23.3 m².

The suite consists of a living space, kitchen area and a bathroom with combined shower and toilet.

Furnishing: single bed, writing desk with a table lamp, chair, bookshelf, wardrobe with sliding doors, kitchenette (consisting of electric stove, rangehood and a refrigerator).

Kitchen utensils (pots, pans, cutlery, plates and dishes etc.) are not provided.

A TYPE SINGLE ROOM





A TYPE SHARED ROOM



B TYPE ROOMS

Double bedroom suite for 2 people (2 B type Single rooms) to 3 people (1 B type Single room and 1 B type Shared room).

Total area 39.9–45.8 m².

The suite consists of living space, kitchen area, a combined shower and toilet bathroom, two separate bedrooms intended for one or two people.

Furnishing: single-bed, writing desk with table lamp, chair, bookshelf, wardrobe with sliding door, kitchenette (consisting of electric stove, rangehood and refrigerator), dining table.

Kitchen utensils (pots, pans, cutlery, plates and dishes etc.) are not provided.

Daily cleaning, except weekends and holidays, is provided by the Student hostel, which consists of light cleaning of common areas, like the kitchen and bathroom.

B TYPE COMMON AREA





B TYPE SINGLE ROOM



B TYPE SHARED ROOM



C TYPE ROOMS

Shared suite for 5 people (5 C type Single rooms).

Total area 98,6 m².

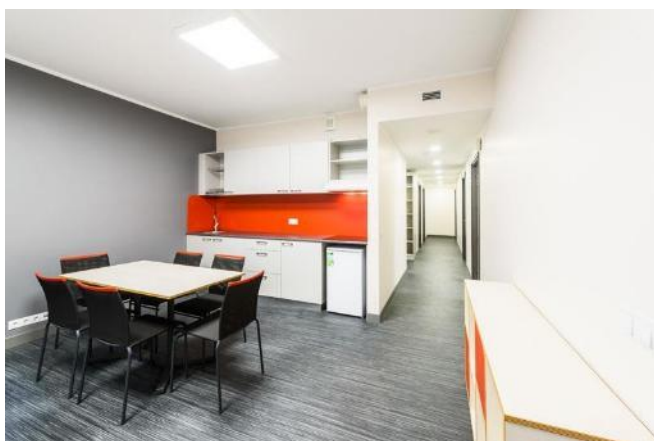
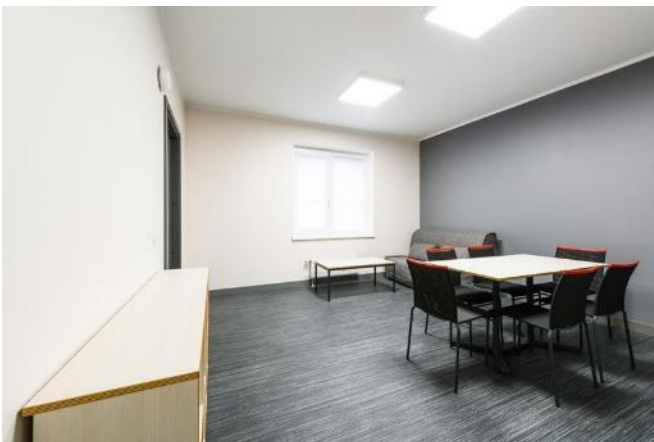
The suite consists of living space, kitchen area, two combined shower and toilet bathrooms and five separate bedrooms intended for one person.

Furnishing: single bed, writing desk with a table lamp, chair, bookshelf, wardrobe with sliding door, kitchenette (consisting of electric stove, rangehood and refrigerator), dining table, sofa.

Kitchen utensils (pots, pans, cutlery, plates and dishes etc.) are not provided.

Daily cleaning, except weekends and holidays, is provided by the Student hostel, which consists of light cleaning of common areas, like the kitchen and bathroom.

C TYPE ROOM COMMON AREA





C TYPE SINGLE ROOM



PRICING

All current pricing for rooms can be found on the RSU website or by scanning this QR code for quick and easy access:



COMMON AREAS

LAUNDRY ROOM

The Student Hostel provides washing machines, dryers and drying racks. At the Student hostel's administration you can also receive an iron.

To use the washing machines or dryers, download the app using the QR code and create a personal profile.

Then choose an available machine by number, make the payment online, load the machine with laundry, put liquid detergent or detergent pods, bleach or fabric softener in the washing machine drum and push the "Start" button.



GYM

The gym is equipped with various weights, treadmill, indoor bicycle, mats, exercise balls, rigs and racks.

The gym is open 24/7 and no reservation is needed.



STUDY AREAS

Study areas are located at the end of each floor. You will find water filter with hot, carbonated and cold water there.

The main study area with the view to the university is located on the third floor.



LIBRARY

The library area is located on the first floor.

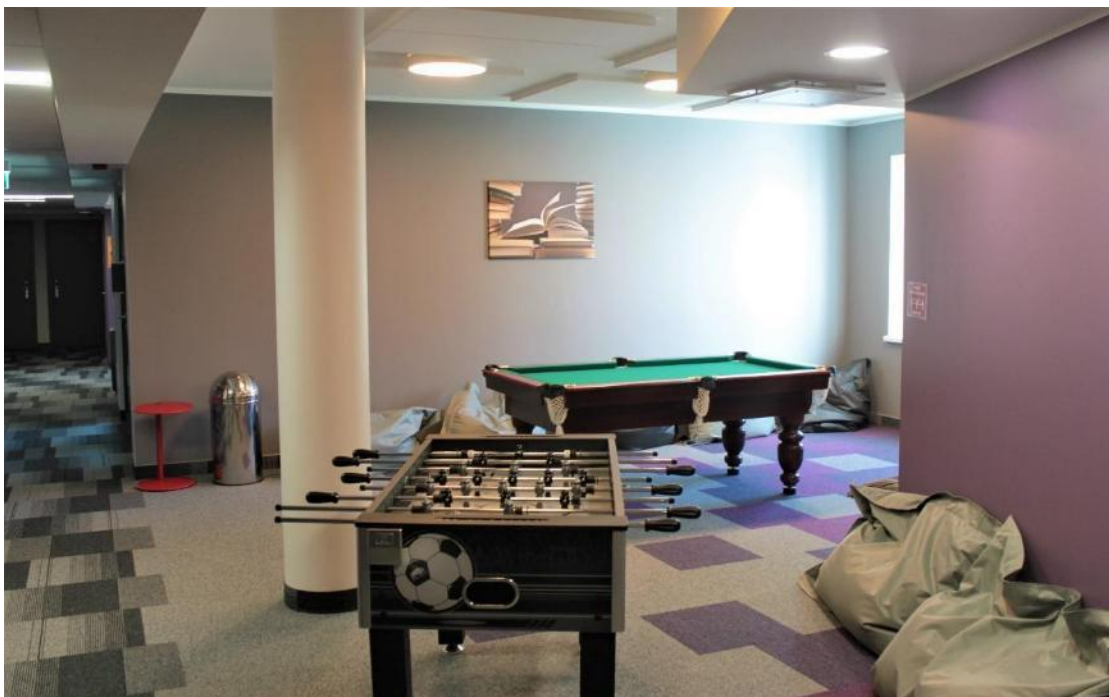
It has a wide range of novels and brochures. It's also a spot to exchange books with others.



GAME AREAS

Game areas are located on the second and third floors.

Recharge from studies by playing table tennis, table football or pool. Game areas can be used until 11PM



PARKING

The student hostel has underground and open-air parking spaces. The Student hostel is connected to the underground parking facility.

It is also possible to use bicycle storage for free.



LOCAL AREA

PUBLIC TRANSPORT

RSU Students can use “Rīgas Satiksme” public transport services for a student fee and purchase a monthly ticket. Please visit the “Rīgas Satiksme” website, to see the current pricing and ticket options.

To apply for the student discount, visit the nearest “Rīgas Satiksme” Client Service Centre and fill out the registration form. Please don’t forget to bring your Passport or ID card and RSU Student ID card.

Nearest Client Service Centers are located at Prāgas iela 1 (Riga International Bus Terminal) and Stacijas laukums 2 (shopping centre “Origo”, 2nd floor).

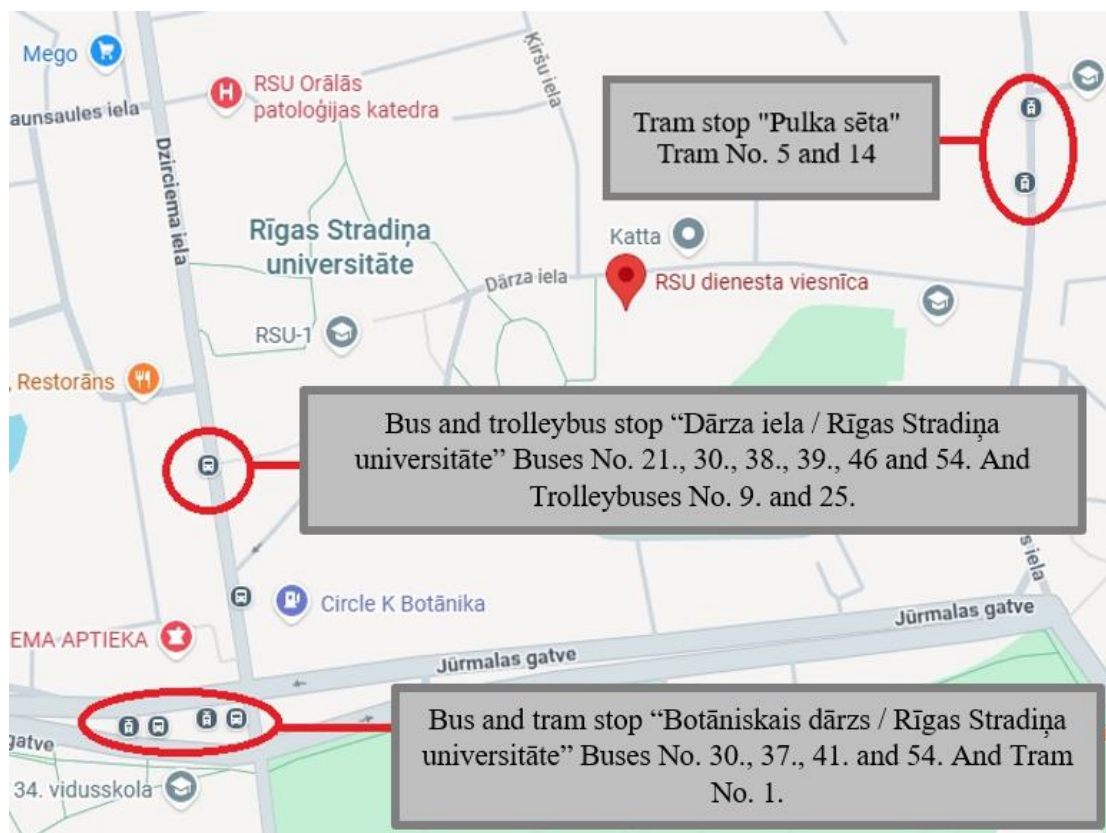
Tickets can be uploaded at vending machines public transport stops or on trams, at ticket selling outlets (Narvesen kiosks, Latvia Post offices, shops such as Rimi, Mego and Maxima) or online using the “Rīgas Satiksme” or “Mobilly” apps.

Tickets are valid on routes operated by Rīgas Satiksme (buses, trams, trolleybuses).


QR code to the “Rīgas Satiksme” website:



Nearest public transport stops from RSU Student hostel “Dzirciems”



Transport options to get to the city centre from nearby public transport stops

 Tram	Route	Get on at	Get off at
No. 1	Imanta - Jugla	Botāniskais dārzs/Rīgas Stradiņa universitāte	Grēcinieku iela, 13. janvāra iela, Stacijas laukums
No. 5	Iļģuciems - Mīlgrāvis	Pulka sēta	Grēcinieku iela, 13. janvāra iela, Nacionālā opera
No. 14	Iļģuciems - Ķengarags	Pulka sēta	Grēcinieku iela, 13. janvāra iela, Centrāltirgus

 Trolleybus	Route	Get on at	Get off at
No. 9	Iļģuciems -Stacijas laukums	Dārza iela/ Rīgas Stradiņa universitāte	Grēcinieku iela, Autoosta, Stacijas laukums
No. 25	Iļģuciems - Brīvības iela	Dārza iela/ Rīgas Stradiņa universitāte	Nacionālais teātris, Mākslas muzejs
 Bus	Route	Get on at	Get off at
No. 21	Imanta - Jugla	Dārza iela/ Rīgas Stradiņa universitāte	Grēcinieku iela, Autoosta, Merķeļa iela
No. 30	Daugavgrīva - Centrālā stacija	Dārza iela/ Rīgas Stradiņa universitāte	Nacionālais teātris, Brīvības bulvāris, Centrālā stacija
No. 37	Imanta - Esplanāde	Botāniskais dārzs/Rīgas Stradiņa universitāte	Nacionālais teātris, Mākslas muzejs, Esplanāde
No. 38	Dzirciema iela - Aberenes iela	Dārza iela / Rīgas Stradiņa universitāte	11. novembra krastmala, Autoosta, Stacijas laukums
No. 39	Lāčupes kapi - Abrenes iela	Dārza iela/ Rīgas Stradiņa universitāte	Grēcinieku iela, Autoosta, Stacijas laukums
No. 41	Imanta - Esplanāde	Botāniskais dārzs/Rīgas Stradiņa universitāte	Nacionālais teātris, Mākslas muzejs, Esplanāde

Use the QR code for detailed public transport routes and schedules:



SHOPS AND GROCERY STORES



Maxima X grocery store at Dzirciema iela 24.

This is one of the closest grocery stores to the Student hostel as it takes a few minutes to walk there. This store is across the RSU main building.



MAXIMA X grocery store at Dzirciema iela 1A.

This is one of the closest grocery stores to the Student hostel as it takes about 10 minutes to walk there.



Rimi Lielezeres grocery store at Lielezeres iela 18.

This is one of the closest grocery stores to the Student hostel as it takes about 10 minutes to walk there.



Shopping centre DAMME at Kurzemes prospekts 1A.

Various cafés, electronic stores, services, clothing stores and RIMI hypermarket grocery store are located in the shopping centre. It takes 15 - 20 minutes to walk to this store or can be reached by taking tram No. 1 towards Imanta, from the tram stop Botāniskais dārzs/Rīgas Stradiņa universitāte to tram stop Kurzemes prospekts.

Inside the shopping centre you will also find the closest **Latvijas pasts** post office to the Student Hostel.

In a building next to **DAMME** there is a shopping centre **K3 Mall of Imanta**, which amongst multiple different stores also houses the market **Imantas tirgus**.



Shopping centre SPICE at Lielirbes iela 29.

This is the nearest shopping centre with various clothing stores, cafés, service shops and a separate building for household items. It takes 35 - 40 minutes by public transport to reach the shopping centre.

CAFES AND RESTAURANTS



Cafes at **Shopping centre DAMME** at Kurzemes prospekts 1A.

Popular café **Lage Gastronomija**, restaurants **Vairāk Saules** and **Lido** are located in the shopping centre.



Bakery Ciemakukulis at Kuldīgas iela 19.

This bakery offers a wide variety of pastries, cakes, sweets, snacks and salads. It takes 10 minutes to walk to this bakery.



Kalnciema Ezītis Miġlā at Slokas iela 17. It is one of most respected and highly valued places by the locals. They often host concerts and game nights in a cosy atmosphere. It takes 10 minutes by taking any of the trams, towards the city centre, to this restaurant. You can also receive a 10% discount by showing your student ID card.

For more information visit their website using the QR code:



Gastrobar PIGA at Dagmāras iela 7a. Is the right choice for a smart visitor who appreciates quality and a friendly atmosphere. They often host game nights, karaoke nights and other events in a cosy atmosphere. It takes 15 minutes to walk there or a few minutes by taking either tram No. 5 or 14 towards Iļģuciems.

PARKS

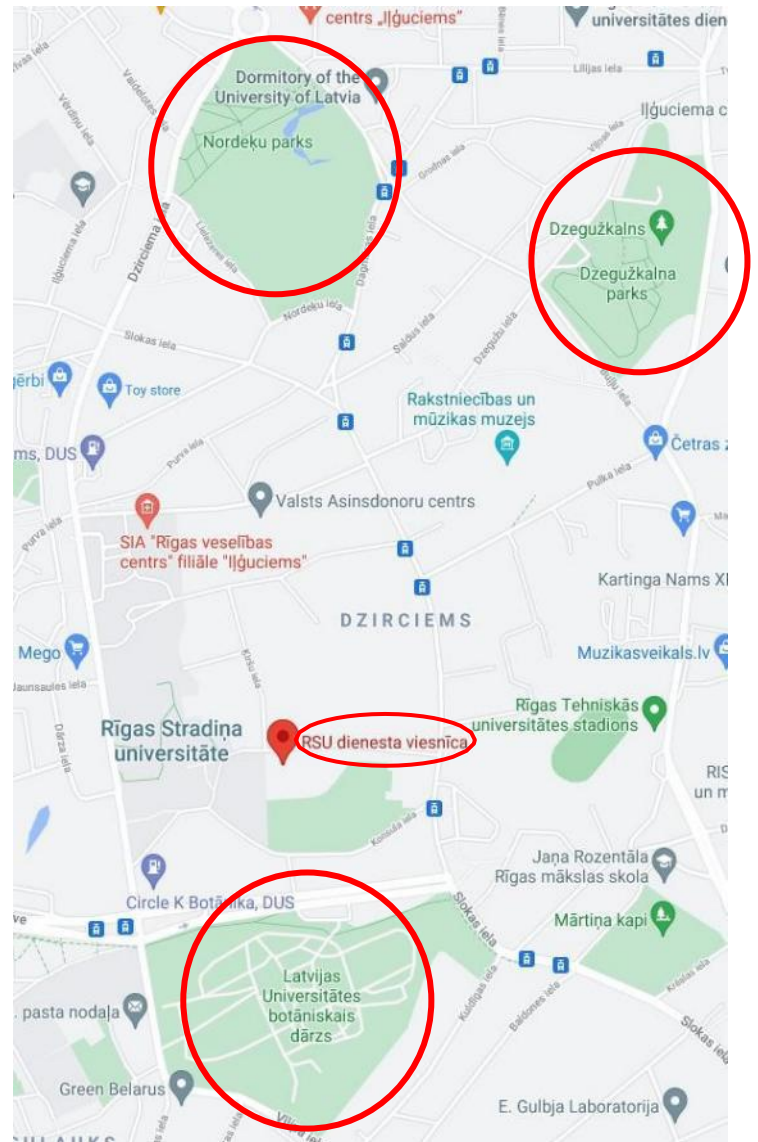


Park Dzegužkalns

It's a park with the highest natural hill in Riga, the highest point is at the northern end of the dune (28 m above sea level), relative height 16-18 m.

The park also has a stage for open area concerts.

It's a perfect place for jogging, taking a relaxing walk and watching the sunset or sunrise.



Park Nordeķu

The total area of the park is 3.6 ha.

Today, 31 foreign and 15 native trees and shrub species grow in the park. European larch and cedar pines, Siberian cedar pines, Dutch lindens, etc. are planted here from foreign trees. The most common shrub species are false spirea and common snowberry, dwarf serviceberry, red elderberry. Lilac and roses can also be seen here.



The Botanical Garden of the University of Latvia

The Garden was founded in 1922. Visitors can explore greenhouses and outdoor collections with about 6,000 different plants. It is one of the most well-loved recreational spaces in Riga – you can slowly walk around the Garden’s territory, get to know plants from all over the world, visit the Palm House, as well as the Tropical Butterfly House, or just enjoy lush nature in the middle of the city.

The Garden’s collections are wide and carefully chosen – they include protected plants, or those used for medical treatment, as well as a collection of the poisonous plants of Latvia. Many of the trees in the arboretum are uncommon for Latvian flora, for example, the witch hazel, cedar, walnut tree, ginkgo tree, mulberries, roses, cork tree and an edible chestnut tree.

For more information about the botanical garden and visiting hours visit their website using the QR code:



USEFUL INFORMATION

ROOM CLEANING

Daily

- Take out the trash
- Make your bed
- Clean off cluttered surfaces
- Clean the shower glass
- Clean all surfaces and stove after cooking

Weekly

- Vacuum, sweep the floor
- Wash the floor
- Do the laundry
- Disinfect commonly touched surfaces
- Get rid of clutter piles
- Dust surfaces in the room

Monthly

- Clean the mirrors
- Clean out the refrigerator
- Throw away old food

These are our suggestions to keep your room clean and tidy and to prevent any damages. Small daily habits make weekly and monthly cleaning much easier.

CLEANING SUPPLIES

For daily cleaning tenants can use student hostel's provided vacuum cleaner, broom and mop.



Seal ECO – bathroom: bathroom cleaner against limestone.

Effective against limestone deposits, as well as soap deposits. Cleaner for all types of sanitary facilities and surfaces (tiles, shower stalls, water taps, sinks, acrylic surfaces, baths).

You can buy it at drugstore Drogas:



Seal Tīrīšanas līdzeklis VANNAS ISTABAI: bathroom cleaner, especially suitable for acrylic surfaces.

Effective cleaning agent for cleaning sinks, bathtubs, tiles and other washable surfaces.

You can buy it at drugstore Drogas:



Seal Tīrīšanas līdzeklis KALĶAKMENIM: limescale cleaner.

Detergent for cleaning and removing limescale deposits of water faucets, kitchen dish drains, shower cabins and acrylic bathubs.

You can buy it at drugstore Drogas:





Seal Tīrīšanas līdzeklis WC: toilet cleaner.

Can be used for toilet bowl, bath, plumbing cleaning. The product will take care of the cleanliness and shine of bathtubs, toilets and sinks.

Do not use for water taps!

You can buy it at drugstore Drogas:



Seal Tīrīšanas līdzeklis STIKLAM: window cleaner.

Used for cleaning windows, mirrors, glass, ceramic surfaces, refrigerators and magnetic boards.

You can buy it at drugstore Drogas:

Tip: we also suggest to use vinegar for cleaning shower glass!



Seal Tīrīšanas līdzeklis VIRTUVEI: for dirty surfaces and greasy deposition.

Suitable for moisture resistant surfaces (ovens, rangehoods, stoves, tiles, metallic, plastic, ceramic surfaces, painted walls).

Do not use it for wooden and laminated surfaces!

You can buy it at drugstore Drogas:



RECYCLING

At the Student hostel we offer 5 types of recycling options:

- 1) **For plastic** – plastic shopping bags, bottles, shampoo bottles and other similar plastic – **use the yellow container;**
- 2) **For glass** – **use the green container;**
- 3) **For paper, cardboard** - flattened boxes, beverage cardboard boxes, newspapers and other similar cardboard products – **use the blue container;**
- 4) **For general waste** – **use the black container;**
- 5) **For biodegradable waste** - dry food scraps without packaging and green waste that can be efficiently recycled into compost - **use the brown container.**

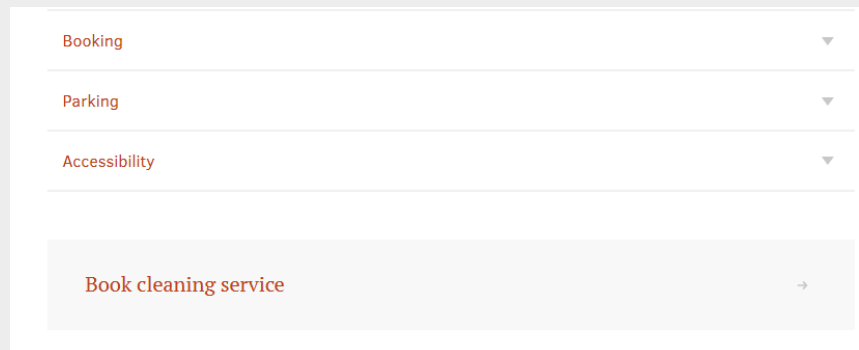


CLEANING ORDER

During your stay at the Student hostel it is also possible to order room cleaning service.

We also ask all the tenants to order it before ending the stay at the Student hostel.

You can find the link to the cleaning service website on the RSU website using this QR code and scrolling down to “Book cleaning service”:

A screenshot of a website's navigation menu. It features four items: 'Booking', 'Parking', 'Accessibility', and 'Book cleaning service'. Each item is in a light red font and has a small downward-pointing triangle to its right. The 'Book cleaning service' item is highlighted with a light grey background and has a rightward-pointing arrow to its right.

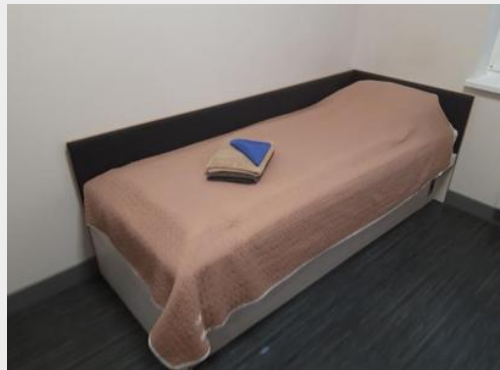
When ordering room cleaning, please select the date, correct address and cleaning type and time of the cleaning. After which, go to checkout and enter your name, e-mail address, phone No., and room No.

BED LINEN AND TOWELS

TYPES OF BED LINENS AND TOWELS

The Student hostel is providing tenants with these types of bed linens:

- Bed cover
- Blue kitchen towel
- Bathroom towels (grey and brown)
- Pillow
- Pillowcase
- Duvet
- Duvet cover
- Blanket
- Moisture-proof bed sheet
- Bedsheet



If you are planning to use your own bed linens or towels, please inform the front desk and return our provided bed linens or towels to us.

BED LINEN AND TOWEL CHANGE

- The Student hostel is providing a bed linen and towel change. It's held approx. every 10 days.
- The bed linen change schedule and notices will be sent beforehand to the tenants' e-mail addresses.
- The laundry collector will collect and replace the used bed linens with a clean set of bed linens and towels.
- Once a month during the bed linen and towel change a room check is held. During the room check the room cleanliness, bathroom cleanliness and cooler compartment in the fridge is checked.
- If you have received a damaged bed linen set, inform the administration immediately during the linen change day, as any complaints after that will not be accepted.
- Please note that by damaging bed linens or towels (for example with hair dye, non-washable stains etc.) we will issue a fine for losses incurred.
- Using a towel as a shower rug also damages it, so we would recommend you to purchase a shower rug.
- The kitchen and the bathroom towels provided by the Student hostel can't be used to defrost the fridge. For this purpose, it is possible to borrow towels at the Student hostel's administration.
- The bed linen and towels are included in the rental price.



GENERAL RULES

Some of the main ground rules of RSU Student hostel “Dzirciems”:

- **The rental invoices** should be paid within 10 days in accordance with the invoice received.
- For late payment of rent or services, the Tenant shall pay RSU a contractual penalty of 0.5% (half a percent) of the amount of the delayed payment per day. This penalty will be added to next month’s invoice.
- **The Tenant’s guests shall have the right to stay free of charge in the Student hostel from 7:00 to 23:00**; before and after this specified time, the Tenant’s guests will not be accepted at the Student hostel.
- **Observe the silence in the Student hostel from 23:00 to 7:00**, including not playing musical instruments, not playing audio recordings, not listening to radio or other devices, if it may disrupt or hinder other Tenants. During the rest of the day, the noise generated by the Tenant must not interfere with other Tenants and the Student hostel’s Administration.
- The Tenant and his/her guest shall be **prohibited to stay in the Student hostel in a state of intoxication** and to use alcohol, narcotic drugs, psychotropic and other intoxicating substances, smoke and use electronic smoking devices in the premises and the territory of the Student hostel.
- The Tenant and his/her guest shall be **prohibited to allow unauthorised persons to stay at the Student hostel without approval of the Student hostel’s Administration** and to hand over the student or employee’s card, access card or the key of the rented Room to unauthorised persons in order to enter and stay in the Student hostel.
- **Do not move the furniture or rearrange the existing layout of furniture.** Furniture shall not be remade - shall not be shortened, extended and the original form and number shall not be altered.



PRINTING AND MAIL

It is possible to use printer and copy machine at the Student hostel.

To use it add balance to your student profile through MyRSU “Printing balance”. After that go to the printing portal, upload the documents you want to print out in “Web print”.

You can find the fees for using printing services, using this QR code, in the section “Photocopying, printing, scanning:



To send mail or packages to the Student hostel use the address: **Dārza iela 5, Rīga, Latvija, LV-1007.**

You will be notified by e-mail to come to the front desk to receive your package.

It is possible to get a notification to receive your package at the local post office. It is located in the shopping centre Damme, **Kurzemes prospekts 1a, Kurzemes rajons, Rīga, LV-1067.** You will be able to receive your package at the post office by giving the postal service your notification and showing your ID.

FIRE SAFETY

According to the National Fire Protection Association, cooking is the leading cause of home fires and fire injuries. Ranges or cooktops cause 62% of home fires. Please find some tips about fire safety during cooking:

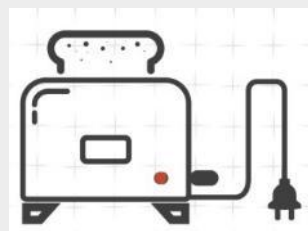
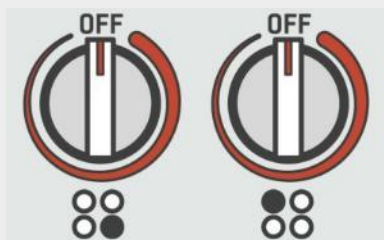
- Prevent fires by keeping your stove top clean of grease and dust.



- Keep anything that can catch fire (paper or fabric towels, kitchen gloves) away from your stove top.



- Double check that everything is off when you finish cooking and always unplug countertop appliances when not in use.



- Never leave the kitchen area while cooking, turn on the stove top and open the window while cooking.
- Never cook while being sleepy or taking medication that makes you drowsy.



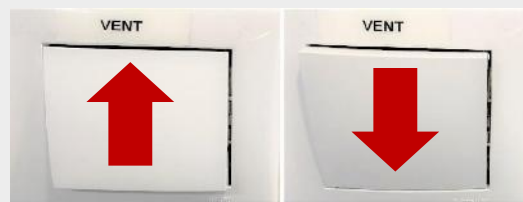
HEATING AND SWITCHES

Some tips about using the heater:

- 1) If the heater is turned to “5” but it is still cold, please fill the problem reporting form (information about it is in the next page).
- 2) If it is too hot in your room, please turn the heater on lower setting. To ventilate the room, keep the window open for 15 minutes.

If you are keeping the window open, especially in winter, please turn the heater to “*”. Be informed, that the heaters are working from late autumn till early spring.

Ventilation system: when the ventilation is switched upwards, it will work with 70% power, but if it is pressed downwards, it will work with 30% power.



Some of the rooms also have **automatic blinds** outside the window. Use the switch to open or close them. Note that the blinds can automatically close in response to bright light or sunlight.




To control the ventilation, blinds and to turn on the lights use your student ID card or any card shaped object and place it in the socket.



PROBLEM SOLVING

If you have noticed any problems with your room, please report it using the problem reporting form. By filling it out our repairman will receive a notification to go to your room and fix it.

The most common problems are clogged shower drain or sink; faucet, toilet leakage, light bulb change above the stove and in the bathroom, heater does not work, door does not lock and broken furniture or kitchen trash bin.

 **Dienesta viesnīcas**

Required fields are marked with an asterisk*

Raise this request on behalf of*





Request type / Pieteikuma veids

Summary / Kopsavilkums*

Adrese/ Adress*

Room number / Istabas numurs*

Description / Apraksts

Normal text ▾ | **B** *I* ... | A ▾ | := ¶= |   @   </> ⓘ + ▾

Attachment

Drag and drop files, paste screenshots, or browse

1. Log in to your RSU profile through the QR code:



2. Choose the request type.
3. Write the summary of the problem.
4. Choose the address (Dārza iela 5).
5. Write your room number.
6. Describe the problem. If needed, you can also attach photos.

LEAVING THE HOSTEL FOR HOLIDAYS

Tips before leaving the Student hostel for holidays

- Clear out the refrigerator from food, that can go bad.
- Turn the switch in the refrigerator to “1”, to save the energy and so that the cooler compartment does not freeze completely.
- Do the dishes and clean the kitchen area.
- Take out all the trash.
- Clean the bedroom area - sweep and mop the floor, vacuum, clean and dust all of the surfaces.
- Clean the bathroom - shower glass, mirror, floor and other surfaces.
- Turn the heater’s switch to “*”.
- Close all of the windows.



MOVING OUT OF THE STUDENT HOSTEL

If you are planning to move out, please follow these 3 steps to ease your moving out process:

- 1) **Filling out the application.** On the moving out day you have to fill out the application form. You can request the application form at the front desk.
- 2) **Leaving the bed linens and towels.** On the day you are moving out you have to take off all the hostels provided bed linens and towels, fold them and place them at the end of the bed.
- 3) **Cleaning the room.** All the tenants have to order the room cleaning, so we can be sure, that the room will be completely cleaned and we could offer it to the next potential tenant. Room cleaning must be ordered by the time you move out. Even before the cleaning staff comes, you still have to leave your room tidy and without trash.

If you are moving out before the end date of your tenancy contract, the security deposit **will not be returned** and **will not cover** any damages or unpaid invoices. The deposit is usually paid back in 4 weeks' time after moving out to the bank account, that will be written in the application.

On the moving out day after you have gathered all your belongings, please inform the front desk. The administrator on duty will go and check your room with you to make sure, that all the hostels provided bed linens and towels have been left undamaged in the room. The room will be observed overall.

If there will be any damages to the furniture or on the walls, that were not there before moving in the room, we will prepare an act on violations on internal regulations and a fine.

*If you have any other questions, you can always contact us on
frontdesk@rsu.lv or call +371 27824945*

