

COOPERATION PARTNERS

RSU



RĪGA STRADIŅŠ
UNIVERSITY

HOSPITALS

- Riga Eastern Clinical University Hospital "Linezers"
- Riga Eastern Clinical University Hospital "Gaiļezers"
- Infectology Center of Latvia
- Children Clinical University Hospital

AMBULATORY MEDICAL CARE INSTITUTIONS

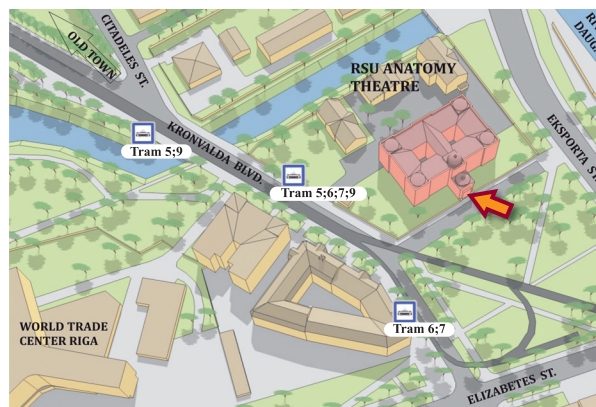
- Health Center 4, Ltd
- E. Gulbis Laboratory, Ltd
- Clinic of Immunology, Ltd
- Biocon, Ltd

RSU STRUCTURAL UNITS

- Department of Infectology and Dermatology
- Department of Paediatrics
- Institute for Occupational Safety and Environmental Health

MAIN RESEARCH EXPERIENCE

- COST program No. BM0803 "A European network of the HLA diversity for histocompatibility, clinical transplantation, epidemiology and population genetics (hla-net)", 2009–2013
- Research project No.10.0010. "Genetic studies of human diseases and longevity in Latvian population", 2010–2014



CONTACTS

Address: Kronvalda blvd.9, Riga, Latvia LV-1010

Phone: +371 67326525
+371 29436131

E-mail: Jelena.Eglite@rsu.lv

www.rsu.lv/kiisl



IEGULDĪJUMS TAVĀ NĀKOTNĒ



Prospect was printed by ERDF Project
No 2010/0200/2DP/2.1.1.2.0/10/APIA/VIAA/006



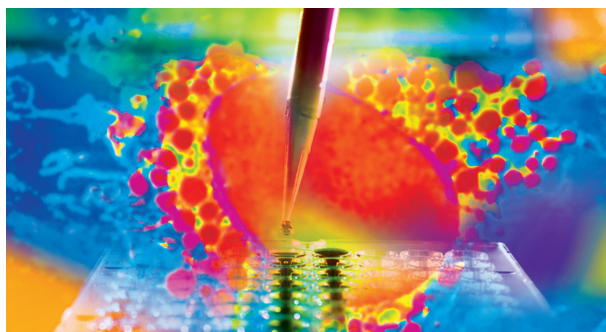
LABORATORY OF CLINICAL IMMUNOLOGY AND IMMUNOGENETICS

ABOUT THE LABORATORY

The Laboratory of Clinical Immunology and Immunogenetics (LCII) at Riga Stradiņš University was established in 1987. In 2009 the Laboratory was certified according to the international quality standard for research laboratories ISO9 001: 2008 and now is a competent institution in immunology and immunogenetic field.

In Latvia the Laboratory performs microbiological, immunological, immunogenic analysis of human and animal material and provides advice on all aspects of laboratory testing and, if necessary, helps the customer to choose the most appropriate research methods.

The Laboratory has set the tasks to provide a high level of service and to introduce new and innovative technologies.



RESEARCH FIELDS

- Clinical application and research development identifications of MHC genes, HLA genes, cytokine genes
- Cytokines interaction in peripheral blood Investigations of genetic polymorphisms
- New criteria for "risk genes" and associations with various diseases
- Investigation of the efficacy of HIV/AIDS therapy

CLINICAL ANALYSES

- BRCA1 and BRCA2 DNA test for risk of developing breast and/or ovarian cancer
- DNA test for celiac disease risk
- Autoantibody detection by indirect immunofluorescence assay:
 - cytokine induction in peripheral blood cell
 - detection of various molecules (cytokines, lymphokines, chemokines, antibody, etc.) by ELISA
- Cytomegalovirus DNA (RT-PCR)
- Cytomegalovirus DNA quant(RT-PCR)
- Epstein – Barr virus (RT-PCR)
- Gonorrhea Neisseria DNA (RT-PCR)
- Papillomavirus DNA (RT-PCR)
- Human papillomavirus (HPV) (RT-PCR)
- Ureoplasma urealyticum (RT-PCR)
- Mycoplasma hominis (RT-PCR)
- Herpes simplex (HSV1)/2, (RT-PCR)
- Herpes Zoster (VZV), (RT-PCR)
- HPV virus types 6 and 8 (RT-PCR)

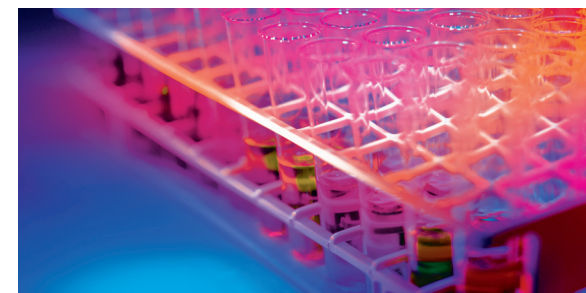
LABORATORY EQUIPMENT

- DT lite Real-Time PCR System (ultra-sensitive optical system with 4 channels)
- Absorbance Microplate Reader ELx800TM BioTek
- Microplate Strip Washer ELx50TM BioTek
- Microscope Opton Axioplan
- DT_322 Real-Time PCR System (ultra-sensitive optical system with 2 channels)
- Qubit fluorometer – instrument used for quantification of DNA, RNA, and protein

TRAINING

The Laboratory provides training for medical personnel of our collaboration partners as well as organizes seminars and lectures for clinical doctors and presents information on laboratory diagnosis of the disease, finding optimal solutions for clinical problems.

The staff of the RSU Laboratory of Clinical Immunology and Immunogenetics participate regularly at lectures, seminars, qualification upgrade courses, international congresses.



STAFF

Head of Laboratory: Jelena Eglite, Dr. Med.

Immunologist: Arturs Sochnevs, Prof. Hab. Med.

Immunologists and molecular biologists:

Elvira Hagina
Lilija Kovalchuk

Scientific assistant and molecular biologist:

Una Bekmane

Scientific assistant and pharmacist:

Diana Kasjko

Scientific laboratory specialist:

Daira Cvileva

All medical personnel are certified. The personnel have had in-service training in foreign laboratories.