

CERTIFIED PROFESSIONALS PROVIDE THE FOLLOWING SERVICES:

- Animal breeding for experimental and scientific purposes;
- Care and maintenance of animals in accordance with the Latvian and European welfare requirements;
- Training on issues related to the use of animals in research;
- Provision of advisory services in the preparation of research projects and presentation to the Food and Veterinary Service (PVD) and the Council for Ethical Treatment of Animals.

THE FOLLOWING ANALYSES ARE CARRIED OUT:

- Determination of the acute toxicity of chemical substances;
- Determination of the chemical irritation of the skin and conjunctiva.



**Rīga Stradiņš University
Laboratory of Experimental Animals
CONTACT US:**

Address: Hipokrāta Str 2, Rīga,
LV-1038, Latvia

Phone: + 371 67536267
+ 371 67042795

E-mail: EDL@rsu.lv, Leontine.Antonovica@rsu.lv

**LABORATORY
OF EXPERIMENTAL
ANIMALS**

ABOUT US

The beginnings of the Laboratory of Experimental Animals (LEA) date back to 1977 when laboratory animals – dogs, mice, rats, guinea pigs – were first used in research in Latvia.

In 2005, the Registration Certificate of the Veterinary Supervision Facility with No 025479 was granted to the breeding establishment, which attests to the capability of the supervision facility to continuously ensure that its activities comply with the regulatory enactments.



LEA is responsible for promise that all use of animals is humane and complies with all relevant policies and legal requirements. The centralized animal care and use program at Rīga Stradiņš University complies with state and local guidelines for laboratory animal care.

Currently, LEA is the only facility in Latvia that is engaged in the breeding and supplying of animals for experiments, as a result establishing a continued cooperation with scientific research institutions using laboratory animals in experiments.

EXPERIMENTAL ANIMALS



Inbred mice

C57BL6



Outbred mice

ICR



Inbred mice

Balb/c



Outbred guinea pigs

Albino guinea pigs



Inbred mice

CBA



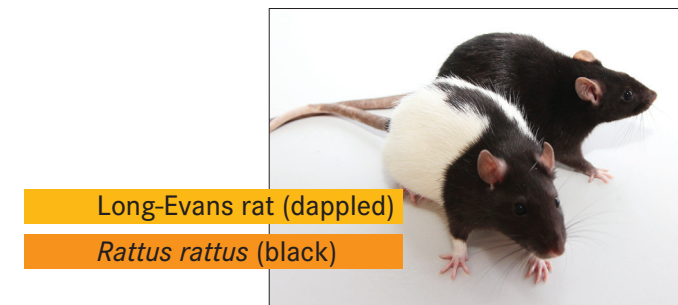
Outbred rats

Wistar



Inbred mice

DBA/2



Long-Evans rat (dappled)

Rattus rattus (black)