



GRIF.LV


DROŠS DARBS - DROŠS BUSINESS™

Individuālie aizsardzības līdzekļi pret optisko starojumu

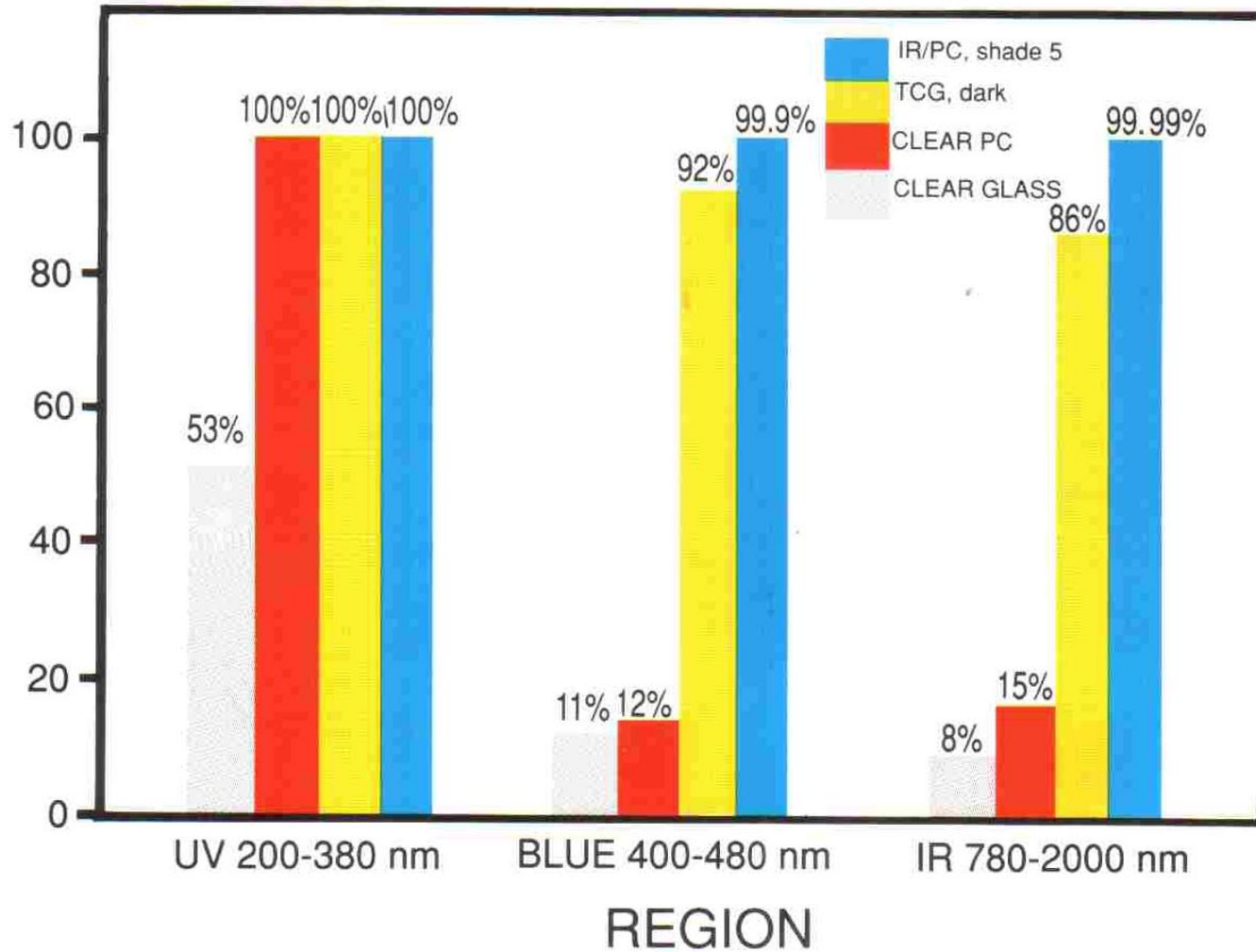
Pēteris Celmiņš

SIA "GRIF"

2010.1.07.



% RADIATION PROTECTION

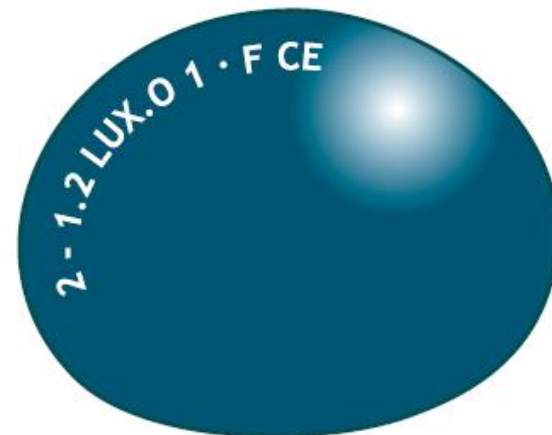


LĒCU MARĶĒJUMS

Lēcas marķējums (piemērs):

2 C - 1,2 D 1 F 9 K

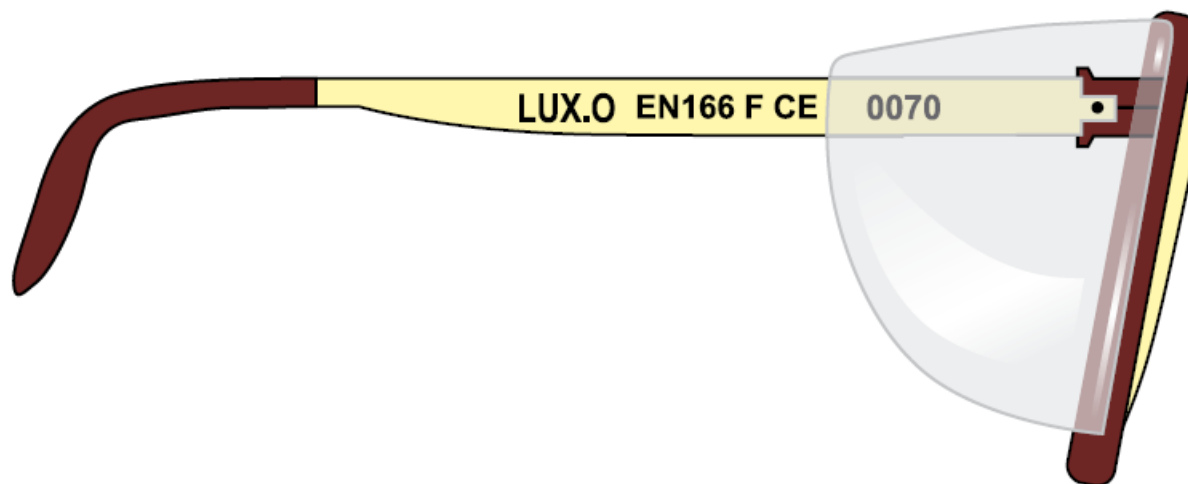
- **K** – papildus īpašības
- **9** – pielietošanas kodi;
- **F** – trieciena izturības simbols;
- **1** – optiskā klase
(1 – pastāvīgai lietošanai;
2 – retai lietošanai;
3 – ārkārtēji retai lietošanai);
- **D** – ražotāja identifikācija;
- **1,2** – tonēšanas pakāpe (brillēm no 1,2 līdz 8);
- **C** – uzlabota krāsu atpazīšana 2. un 4. tipa lēcām;
- **2** – lēcas tips (2&3=UV; 4=IR; 5&6=saules)



GRIF.LV

DROŠS DARBS - DROŠS BUSINESS™

IETVARU MARKĒJUMS



D 166 3 B T

- T – papildus īpašības
- B – trieciena izturības simbols
- 3 – pielietošanas sfēras kodi
- 166 – standarta numurs EN 166
- D – ražotāja identifikators

Clear
EN166 - EN170



Application : For indoor use where eye protection is required against most commonly encountered hazards (i.e. impact protection).

Absorbs > 99.9% of UV radiation up to 385nm.
VLT*: 92% - Lens Marking : 2(C)-1.2 B-D.1.F
Lens Material :
Polycarbonate (unless described as Acetate)

I/O Silver
(Indoor/Outdoor)
EN166 - EN170 - EN172



Application : High performance lens for indoor/ outdoor use to reduce artificial and sunlight glare. Provides protection against most commonly encountered hazards.

Absorbs > 99.9% of UV radiation up to 385nm.
VLT*: 45% - Lens Marking : 5-1.7 B-D.1.F
Lens Material :
Polycarbonate

TSR Grey
(Traffic Signal Recognition)
EN166 - EN170 - EN172



Application : For outdoor use when sunlight and glare can cause eye fatigue. Meets the requirements of colour Traffic Signal. Recognition. Provides protection against most commonly encountered hazards.

Absorbs > 99.9% of UV radiation up to 385nm.
VLT*: 22% - Lens Marking : 5-2.5 B-D.1.F
Lens Material :
Polycarbonate

HDL Yellow
(High Definition lens)
EN166 - EN170



Application : To provide high visibility and good contrast in low light conditions. Provides protection against most commonly encountered hazards.

Absorbs > 99.9% of UV radiation up to 400nm.
VLT*: 87% - Lens Marking : 2-1.2 B-D.1.F
Lens Material :
Polycarbonate

Dark TCG
(True Colour Grey)
EN166 - EN170 - EN172



Application : For outdoor use when sunlight and glare can cause eye fatigue. Allows excellent colour discrimination. Provides protection against most commonly encountered hazards.

Absorbs 99.9% of UV radiation up to 385nm.
VLT*: 17% - Lens Marking : 5-3.1.B-D.1.F
Lens Material :
Polycarbonate (unless described as Acetate)

Cappuccino
EN166 - EN170 - EN172



Application : For outdoor use when sunlight and glare can cause eye fatigue. Meets the requirements of colour Traffic Signal. Recognition. Provides protection against most commonly encountered hazards. The lens colour enables better eye adaptation to light changes while increasing contrasts.

Absorbs > 99.9% of UV radiation up to 385nm. VLT*: 27%
Lens Marking : 5-2.5.B-D.1.F
Lens Material : Polycarbonate

Blue Mirror
EN166 - EN170 - EN172



Application : For outdoor use when bright sunlight and glare can cause eye fatigue (the mirror coating reflects the glare for better protection).

Absorbs > 99.9% of UV radiation up to 385nm.
VLT*: 23% - Lens Marking : 5-2.5.B-D.1.F
Lens Material :
Polycarbonate

Orange Mirror

EN166 - EN170 - EN172



Application : For outdoor use when bright sunlight and glare can cause eye fatigue (the mirror coating reflects the glare for better protection).

Absorbs > 99.9% of UV radiation up to 385nm.
VLT*: 35% - Lens Marking : 5-2.0.B-D.1.F
Lens Material :
Polycarbonate

Silver Mirror

EN166 - EN170 - EN172



Application : For outdoor use when bright sunlight and glare can cause eye fatigue. Meets the requirements of colour. Traffic Signal Recognition. Provides protection against most commonly encountered hazards.

Absorbs > 99.9% of UV radiation up to 385nm.
VLT*: 12% - Lens Marking : 5-3.1 B-D.1.F
Lens Material :
Polycarbonate

Blue Cobalt

EN166 - EN171



Application : For high heat applications such as furnaces or foundries. Reduces the glare from molten metal or glass, and provides infrared protection. Not suitable for impact protection.

VLT*: 1.5%
Lens Marking : 4-6.B-D.1
Lens Material :
Mineral

I.R. Shade

1.7 • 3 • 4 • 5
EN166 - EN169 - EN171



Application : For welding applications :
Shade 1.7 = Welder's Assistant.
Shades 3 & 5 = oxy-cutting, gas welding.

VLT*: 1.7 = 51% • 3 = 17% • 4 = 6% average • 5 = 2% • 6 = 0.7%
Lens Marking : 4-1.7 / 4-3.0 / 4-4 / 4-5 B-D.1.F
Lens Material :
Polycarbonate

Reinforced Glass

EN166



Application : For dusty or chemical environments where no protection against impact is needed (foundry cleaning, chemistry lab). Excellent protection against abrasion and chemical splashes. Not suitable for impact protection.

VLT*: 94%
Lens Marking: B-D.1.S
Lens Material :
Tempered Mineral

Welding Glass

Shade 5
EN166 - EN169



Application : For welding.
Provides infrared protection.
Not suitable for impact protection.

VLT*: 2%
Lens Marking: 5.B-D.1
Lens Material :
Mineral

Green 6-2.5

EN166 - EN172



Application : For outdoor use when sunlight and glare can cause eye fatigue. Provides protection against most commonly encountered hazards, with the added benefit of IR filtration where radiant heat sources are present.

VLT*: 23%
Lens Marking: 6-2.5 B-D 1 FT
Lens Material :
Polycarbonate

GRIF.LV

DROŠS DARBS - DROŠS BIZNESS™

ACU IAL



BRILŅU VEIDI



Art. 13340

Brilles Fitlogic™ grey.

Lēcas no pelēka polikarbonāta ar regulējamu ietvaru, UV aizsardzība-99.9%.

Marķējums: lēcas 5-2.5_1FT; ietvars 1FT.



Art. 10321

Brilles Pivolux grey

Lēcas no pelēka polikarbonāta ar regulējamu ietvaru, UV aizsardzība-99.9%

Marķējums: lēcas 5-2.5_1FTK; ietvars 1FT



Art. 10516

Brilles PA800/UV400

Lēcas Light Gold Mirror UV400 no polikarbonāta ar regulējamu ietvaru, UV aizsardzība-100%.

Marķējums: lēcas 1F; ietvars F.



Art. 12158

Brilles Lucerne dzeltenas

Brilles no tonēta polikarbonāta, UV aizsardzība-99.9%

Marķējums: lēcas 1F; ietvars F

PIEGUĻOŠĀS BRILLES

GRI
DROŠS DAR



Art. 12250

Aizsargbrilles Venus GAS

Pieguļošas, neaizsvīstošas aizsargbrilles no caurspīdīga polikarbonāta. Bez ventilācijas
Marķējums: lēcas 1B9; ietvars 3.5.9B



Art. 12260

Aizsargbrilles Venus, EN166.1.B

Pieguļošas aizsargbrilles no caurspīdīga polikarbonāta. Tieša ventilācija.
Marķējums: lēcas 1B; ietvars B



Art. 16193

Aizsargbrilles V-Maxx™

Pieguļošas, neaizsvīstošas aizsargbrilles no caurspīdīga polikarbonāta. Netiešā ventilācija.
Marķējums: lēcas 3-1.2_1B9; ietvars 3.4.9BT



Art. 12299

Aizsargbrilles Jupiter

Pieguļošas, neaizsvīstošas aizsargbrilles no caurspīdīga polikarbonāta. Netiešā ventilācija.
Marķējums: lēcas 1B9; ietvars 3.4.9B



Art. 1000146

Automātiska metinātāju aizsargmaska optrel® Satellite brilliant OSE.

Ergonomisks dizains, optimāli līdzsvarota minimālai kakla spriedzei. Augsti kvalitatīvs, termuizturīgs un karstuma necaurlaidīgs materiāls, ļoti izturīgs ārējais aizsargekrans. Paplašināta aizsargzona kakla un ausu aizsardzībai. Gaismas filtrs nodrošina labu objektu redzamību (1). Pastāvīga aizsardzība no UV un IS starojuma (2). Regulējami sensori 60° vai 120 °(3). Saules baterijas (4). Tonēšanas pakāpes regulators maskas ārpusē (5). Slīpēšanas un lodēšanas režīms (6). Jūtīguma kontrole (7). Maināmais izslēgšanas ātrums (8). Divu līmeņu tonēšana DIN 4/5-9 un DIN4/9-13 (9). Ieslēgšanas laiks 0.2 ms pie istabas temperatūras, 0.1 ms pie 55°C, regulējams izslēgšanas laiks 0.1-0.6 s. Darbības temperatūra: no -10°C līdz +70°C.





JSP



JSP



GRIF.LV

DROŠS DARBS - DROŠS BIZNESS™

PALDIES PAR UZMANĪBU!