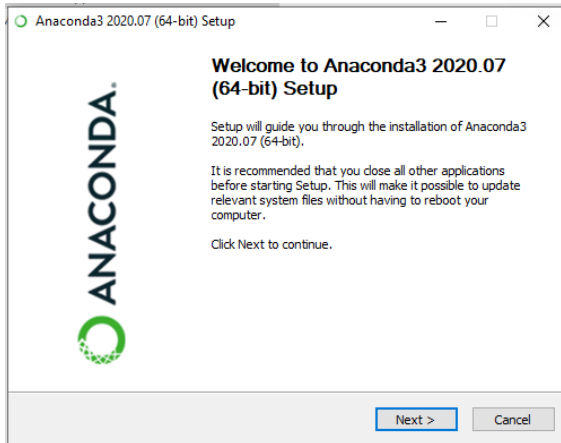


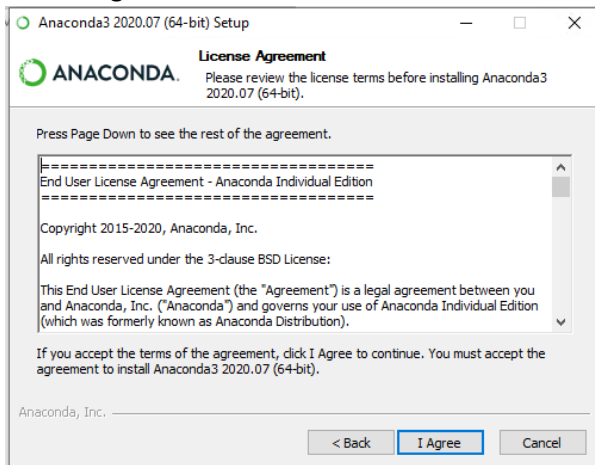
Preparing PC for Machine Learning workshop

Install Anaconda

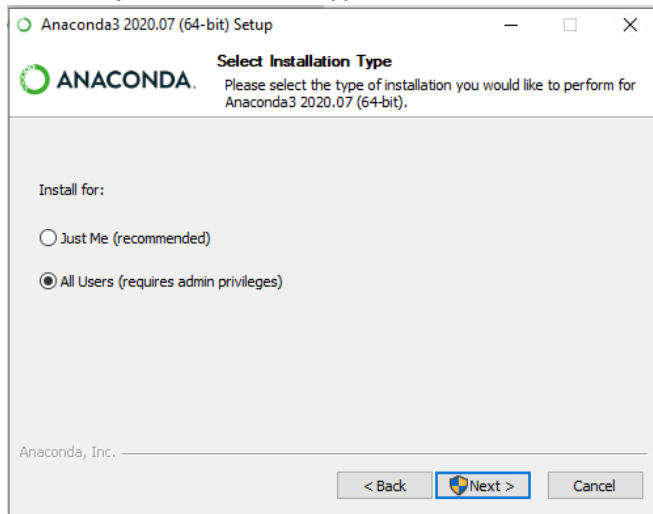
1. Download installer at <https://www.anaconda.com/products/individual>
 - a. Recommended: 64-bit Graphical Installer for Windows (but you can install depending on your OS) – following instructions are provided only for 64-bit Graphical Installer for Windows
 - b. Versions (on October 5th 2020): Python 3.8, Anaconda3-2020.07
2. Run Anaconda installer: Anaconda3-2020.07-Windows-x86_64.exe (if downloaded recommended version)
3. In the “Welcome to Anaconda 2020.07 (64-bit) Setup” window click “Next >”:



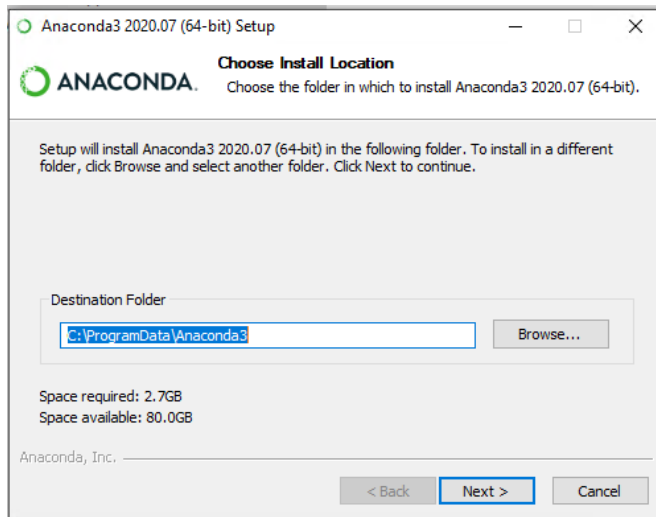
4. Click “I Agree”:



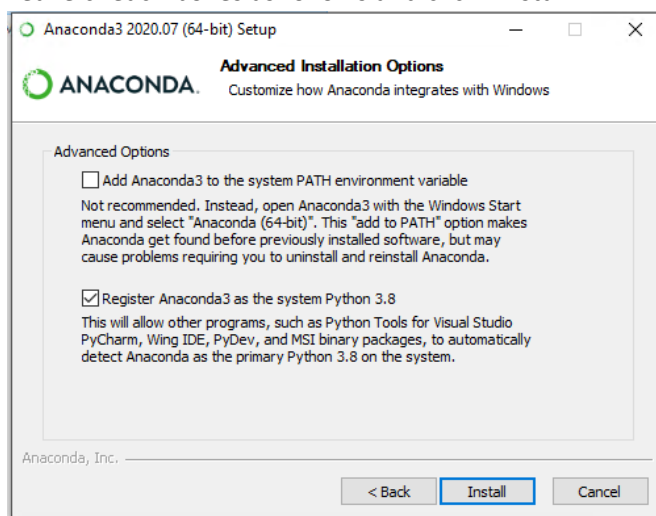
5. Recommended installation is “All Users (requires admin privileges)” (you can install also in default installation type – “Just Me (recommended)”) and click “Next >”:



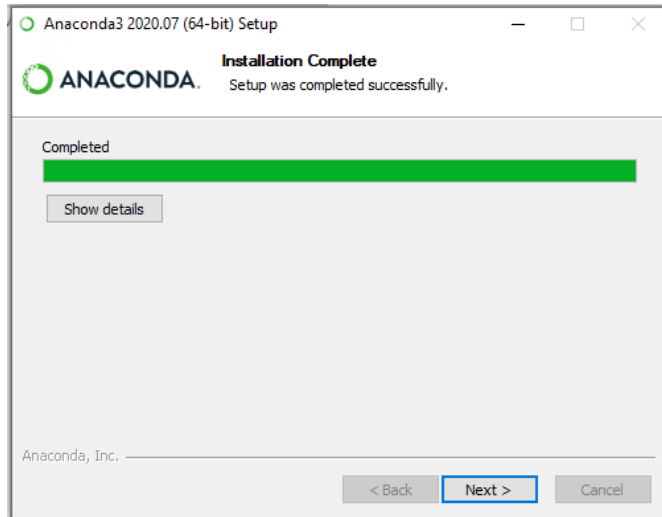
6. Set Destination Folder and click “Next >”:



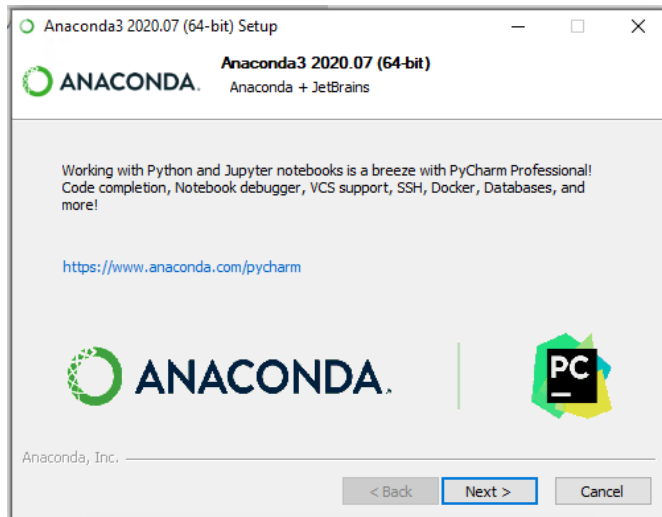
7. Leave check-boxes as follows and click “Install”:



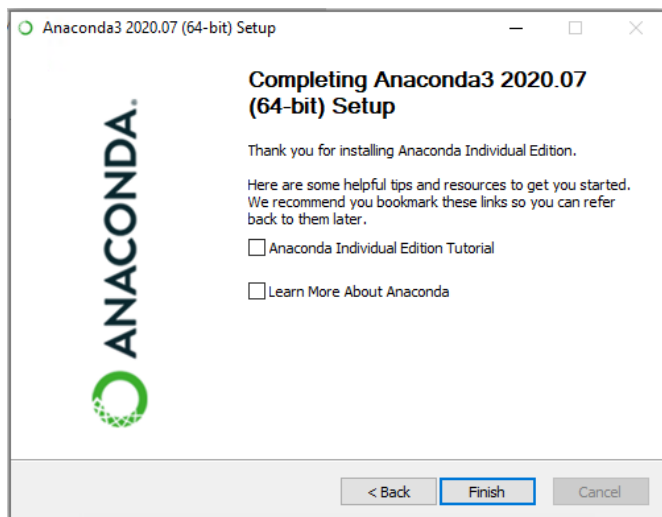
8. When installation completes, click on “Next >”:



9. Click on “Next >”:

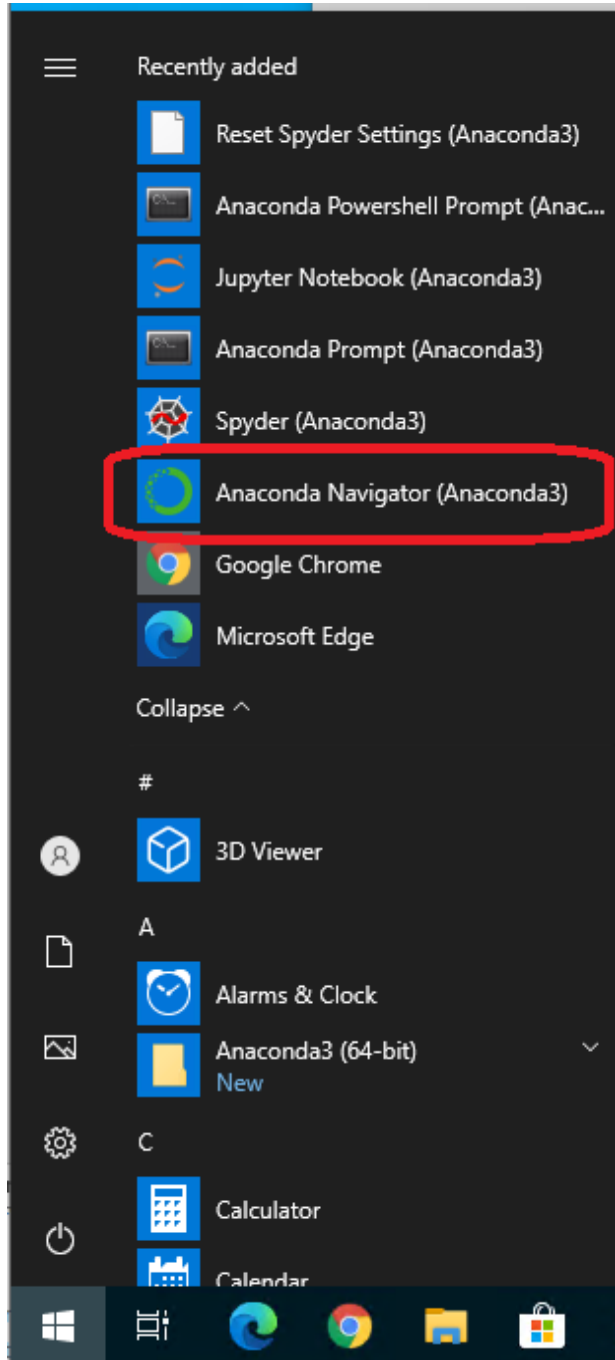


10. Click on “Finish”:

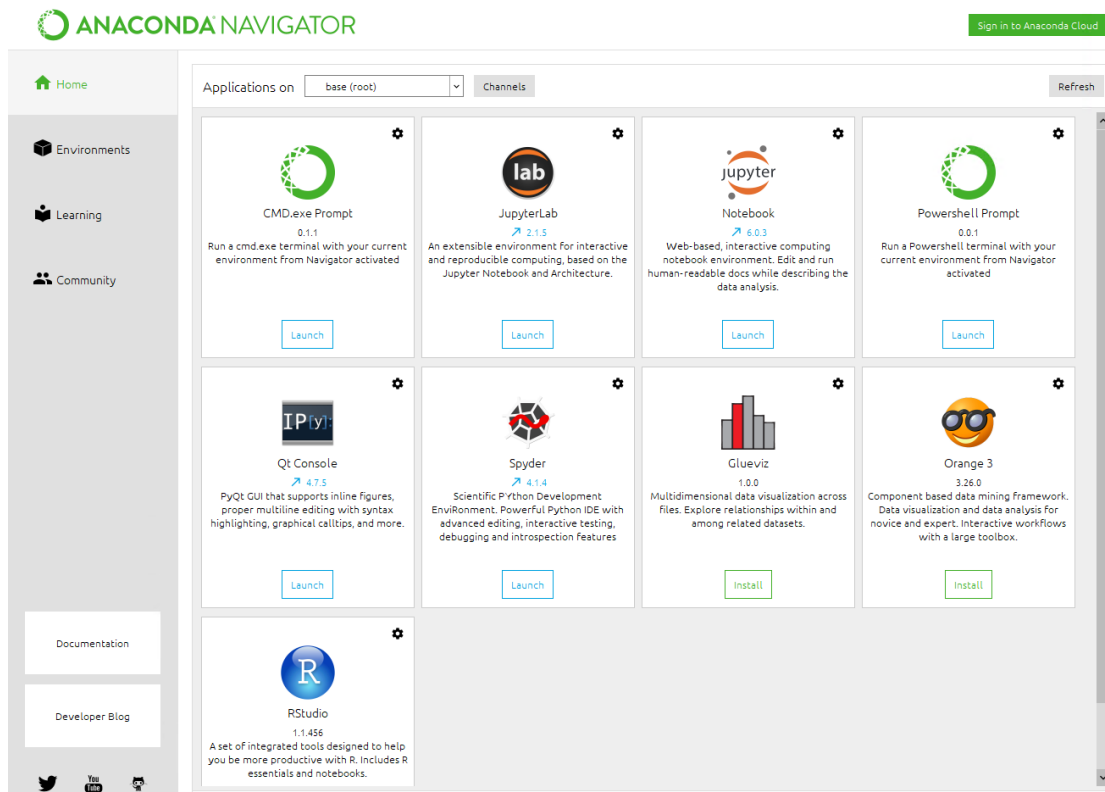


Launch Anaconda, Jupyter, and Spyder

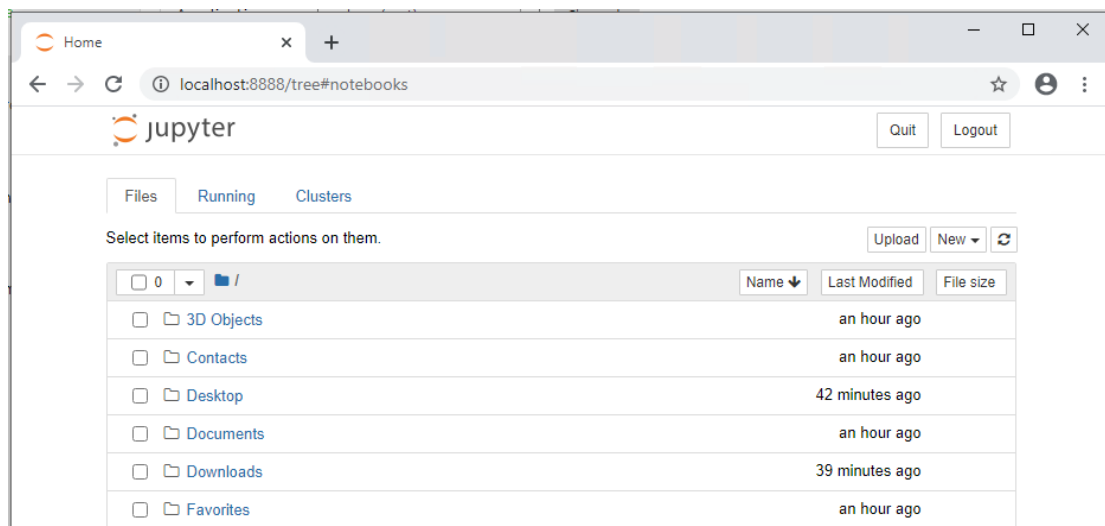
11. Find “**Anaconda Navigator (Anaconda3)**” under start menu:



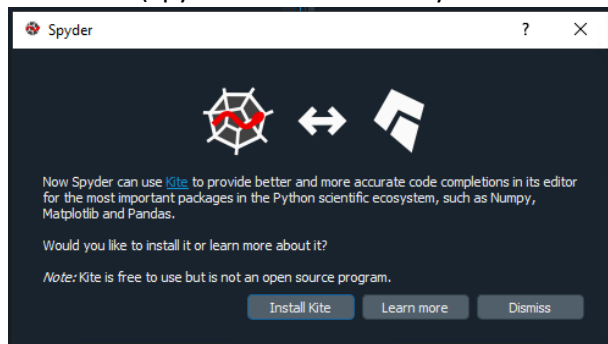
12. Anaconda Navigator shows installed products and products you can install to Anaconda. Through the workshop we will be using **Jupyter** and **Spyder**:



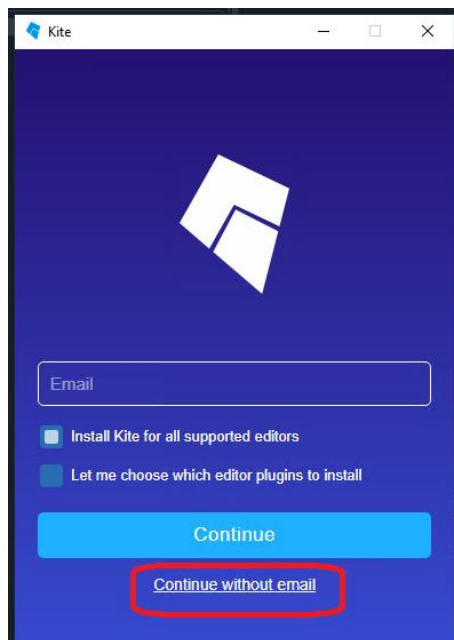
13. Launch Jupyter – it will be opened in your default web browser:



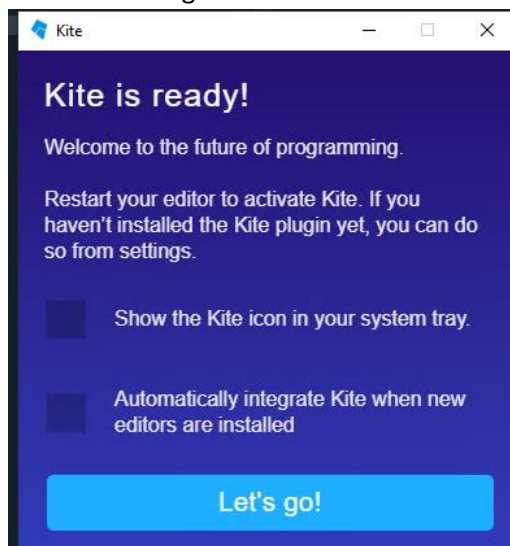
- Return to Anaconda navigator and launch Spyder
- Install Kite (Spyder will automatically ask to install after launching):



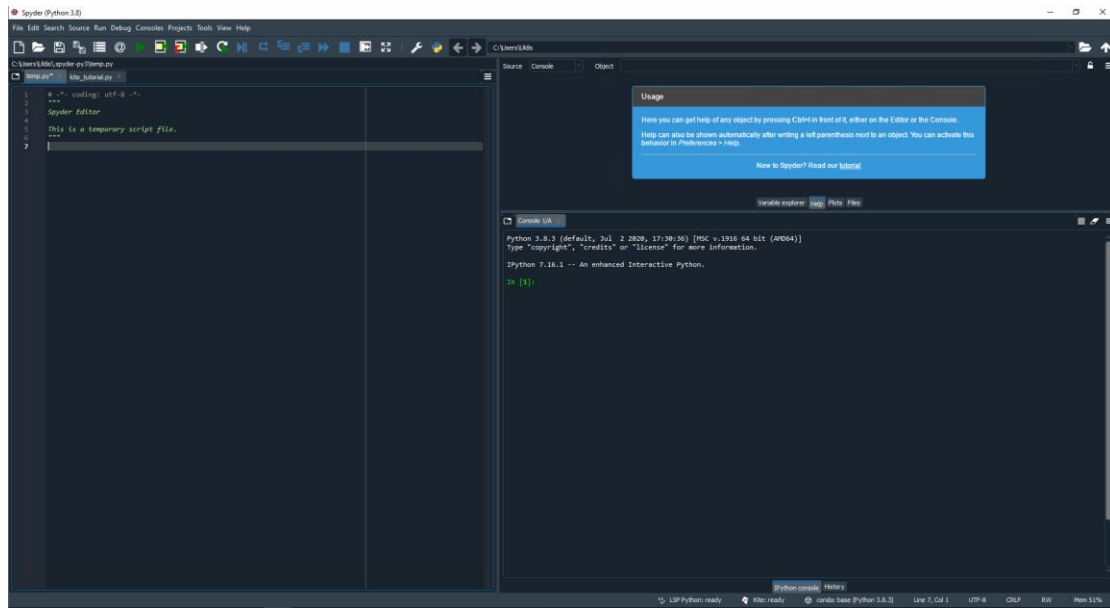
- Click on "Continue without email":



- Click on "Let's go!":



18. Spyder IDE:



Congrats! Your PC now has tools for the ML workshop.